

A0726

Leader in Biomolecular Solutions for Life Science



## DNA topoisomerase II alpha (TOP2A) Rabbit pAb

Catalog No.: A0726

1 Publications

### Basic Information

#### Observed MW

Refer to figures

#### Calculated MW

174kDa

#### Category

Polyclonal Antibody

#### Applications

IF/ICC,ELISA

#### Cross-Reactivity

Human

### Background

This gene encodes a DNA topoisomerase, an enzyme that controls and alters the topologic states of DNA during transcription. This nuclear enzyme is involved in processes such as chromosome condensation, chromatid separation, and the relief of torsional stress that occurs during DNA transcription and replication. It catalyzes the transient breaking and rejoining of two strands of duplex DNA which allows the strands to pass through one another, thus altering the topology of DNA. Two forms of this enzyme exist as likely products of a gene duplication event. The gene encoding this form, alpha, is localized to chromosome 17 and the beta gene is localized to chromosome 3. The gene encoding this enzyme functions as the target for several anticancer agents and a variety of mutations in this gene have been associated with the development of drug resistance. Reduced activity of this enzyme may also play a role in ataxia-telangiectasia.

### Recommended Dilutions

IF/ICC 1:50 - 1:200

### Immunogen Information

#### Gene ID

7153

#### Swiss Prot

P11388

#### Immunogen

Recombinant fusion protein containing a sequence corresponding to amino acids 1314-1503 of human DNA topoisomerase II alpha (TOP2A) (NP\_001058.2).

#### Synonyms

TOP2; TP2A; TOP1IA; TOP2alpha; DNA topoisomerase II alpha (TOP2A)

### Contact



[www.abclonal.com](http://www.abclonal.com)

### Product Information

#### Source

Rabbit

#### Isotype

IgG

#### Purification

Affinity purification

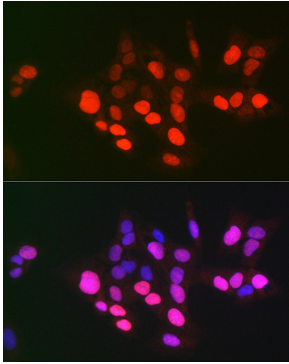
#### Storage

Store at -20°C. Avoid freeze / thaw cycles.

Buffer: PBS with 0.01% thimerosal, 50% glycerol, pH 7.3.

## Validation Data

---



Immunofluorescence analysis of U-2 OS cells using DNA topoisomerase II alpha (DNA topoisomerase II alpha (TOP2A)) Rabbit pAb (A0726) at dilution of 1:100 (40x lens). Secondary antibody: Cy3 Goat Anti-Rabbit IgG (H+L) (AS007) at 1:500 dilution. Blue: DAPI for nuclear staining.