

A0707

Leader in Biomolecular Solutions for Life Science



## [KO Validated] MECP2 Rabbit pAb

Catalog No.: A0707 **KO** Validated

### Basic Information

**Observed MW**

60kDa/80kDa

**Calculated MW**

52kDa

**Category**

Polyclonal Antibody

**Applications**

WB, IHC-P, ELISA

**Cross-Reactivity**

Human, Mouse

### Background

DNA methylation is the major modification of eukaryotic genomes and plays an essential role in mammalian development. Human proteins MECP2, MBD1, MBD2, MBD3, and MBD4 comprise a family of nuclear proteins related by the presence in each of a methyl-CpG binding domain (MBD). Each of these proteins, with the exception of MBD3, is capable of binding specifically to methylated DNA. MECP2, MBD1 and MBD2 can also repress transcription from methylated gene promoters. In contrast to other MBD family members, MECP2 is X-linked and subject to X inactivation. MECP2 is dispensible in stem cells, but is essential for embryonic development. MECP2 gene mutations are the cause of most cases of Rett syndrome, a progressive neurologic developmental disorder and one of the most common causes of cognitive disability in females. Alternative splicing results in multiple transcript variants encoding different isoforms.

### Recommended Dilutions

|       |                |
|-------|----------------|
| WB    | 1:500 - 1:1000 |
| IHC-P | 1:50 - 1:100   |

### Immunogen Information

**Gene ID**

4204

**Swiss Prot**

P51608

**Immunogen**

Recombinant fusion protein containing a sequence corresponding to amino acids 1-280 of human MECP2 (NP\_004983.1).

**Synonyms**

RS; RTS; RTT; PPMX; MRX16; MRX79; MRXSL; AUTSX3; MRXS13; P2

### Contact



[www.abclonal.com](http://www.abclonal.com)

### Product Information

**Source**

Rabbit

**Isotype**

IgG

**Purification**

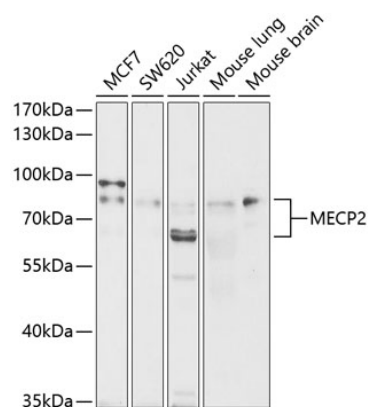
Affinity purification

**Storage**

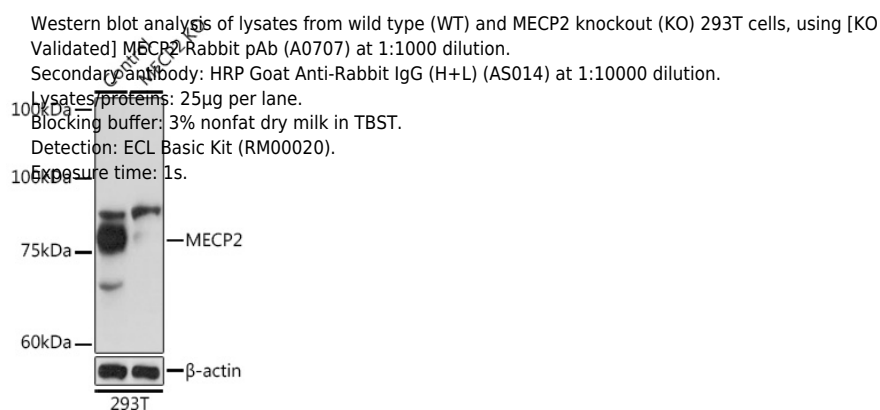
Store at -20°C. Avoid freeze / thaw cycles.

Buffer: PBS with 0.02% sodium azide, 50% glycerol, pH 7.3.

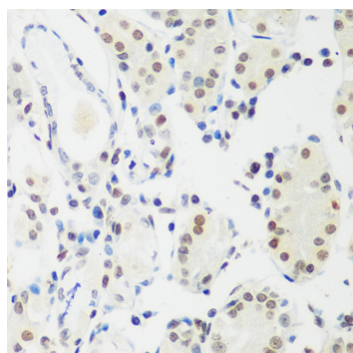
## Validation Data



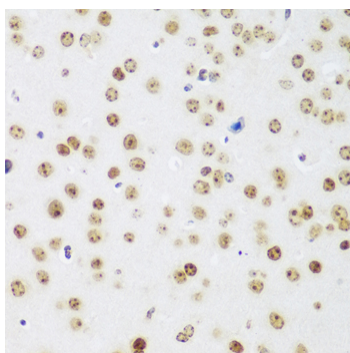
Western blot analysis of various lysates using [KO Validated] MECP2 Rabbit pAb (A0707) at 1:1000 dilution.  
 Secondary antibody: HRP Goat Anti-Rabbit IgG (H+L) (AS014) at 1:10000 dilution.  
 Lysates/proteins: 25µg per lane.  
 Blocking buffer: 3% nonfat dry milk in TBST.  
 Detection: ECL Basic Kit (RM00020).  
 Exposure time: 90s.



Western blot analysis of lysates from wild type (WT) and MECP2 knockout (KO) 293T cells, using [KO Validated] MECP2 Rabbit pAb (A0707) at 1:1000 dilution.  
 Secondary antibody: HRP Goat Anti-Rabbit IgG (H+L) (AS014) at 1:10000 dilution.  
 Lysates/proteins: 25µg per lane.  
 Blocking buffer: 3% nonfat dry milk in TBST.  
 Detection: ECL Basic Kit (RM00020).  
 Exposure time: 1s.



Immunohistochemistry analysis of MECP2 in paraffin-embedded human gastric cancer using [KO Validated] MECP2 Rabbit pAb (A0707) at dilution of 1:100 (40x lens). Perform microwave antigen retrieval with 10 mM PBS buffer pH 7.2 before commencing with IHC staining protocol.



Immunohistochemistry analysis of MECP2 in paraffin-embedded mouse brain using [KO Validated] MECP2 Rabbit pAb (A0707) at dilution of 1:100 (40x lens). Perform microwave antigen retrieval with 10 mM PBS buffer pH 7.2 before commencing with IHC staining protocol.