

A0663

Leader in Biomolecular Solutions for Life Science



CD8A Rabbit mAb

Catalog No.: A0663

Recombinant

4 Publications

Basic Information

Observed MW

35kDa

Calculated MW

26kDa

Category

SMab Recombinant Monoclonal Antibody

Applications

WB,FC,ELISA

Cross-Reactivity

Human

CloneNo number

ARC0329

Background

The CD8 antigen is a cell surface glycoprotein found on most cytotoxic T lymphocytes that mediates efficient cell-cell interactions within the immune system. The CD8 antigen acts as a coreceptor with the T-cell receptor on the T lymphocyte to recognize antigens displayed by an antigen presenting cell in the context of class I MHC molecules. The coreceptor functions as either a homodimer composed of two alpha chains or as a heterodimer composed of one alpha and one beta chain. Both alpha and beta chains share significant homology to immunoglobulin variable light chains. This gene encodes the CD8 alpha chain. Multiple transcript variants encoding different isoforms have been found for this gene. The major protein isoforms of this gene differ by the presence or absence of a transmembrane domain and thus differ in being a membrane-anchored or secreted protein.

Recommended Dilutions

WB	1:500 - 1:1000
FC	1:50 - 1:200

Immunogen Information

Gene ID

925

Swiss Prot

P01732

Immunogen

A synthetic peptide corresponding to a sequence within amino acids 136-235 of human CD8A (P01732).

Synonyms

CD8; p32; Leu2; CD8alpha; CD8A

Contact



www.abclonal.com

Product Information

Source

Rabbit

Isotype

IgG

Purification

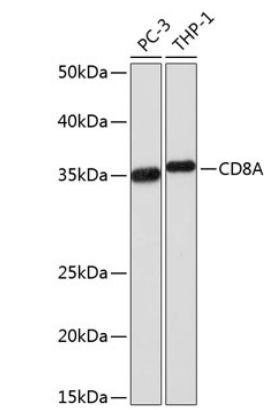
Affinity purification

Storage

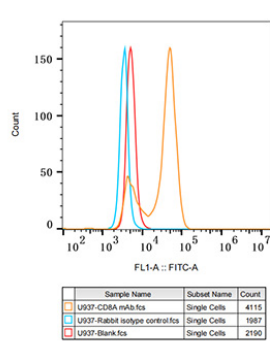
Store at -20°C. Avoid freeze / thaw cycles.

Buffer: PBS with 0.02% sodium azide, 0.05% BSA, 50% glycerol, pH7.3.

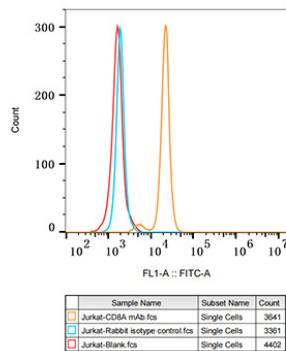
Validation Data



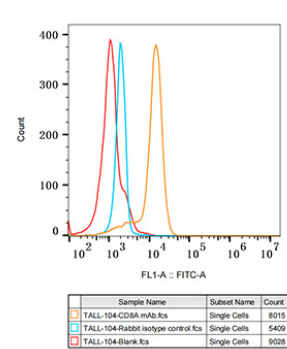
Western blot analysis of various lysates using CD8A Rabbit mAb (A0663) at 1:1000 dilution.
Secondary antibody: HRP Goat Anti-Rabbit IgG (H+L) (AS014) at 1:10000 dilution.
Lysates/proteins: 25µg per lane.
Blocking buffer: 3% nonfat dry milk in TBST.
Detection: ECL Basic Kit (RM00020).
Exposure time: 3min.



Flow cytometry: U937 cells were stained with Rabbit IgG isotype control (AC042, 10 µg/mL, blue line) or CD8A Rabbit mAb (A0663, 10 µg/mL orange line), followed by FITC conjugated goat anti-Rabbit pAb (AS083, 1:200 dilution) staining. Non-fluorescently stained U937 cells were used as blank control (red line).



Flow cytometry: Jurkat cells were stained with Rabbit IgG isotype control (AC042, 10 µg/mL, blue line) or CD8A Rabbit mAb (A0663, 10 µg/mL orange line), followed by FITC conjugated goat anti-Rabbit pAb (AS083, 1:200 dilution) staining. Non-fluorescently stained Jurkat cells were used as blank control (red line).



Flow cytometry: TALL-104 cells were stained with Rabbit IgG isotype control (AC042, 10 µg/mL, blue line) or CD8A Rabbit mAb (A0663, 10 µg/mL orange line), followed by FITC conjugated goat anti-Rabbit pAb (AS083, 1:200 dilution) staining. Non-fluorescently stained TALL-104 cells were used as blank control (red line).