

A0662

Leader in Biomolecular Solutions for Life Science



RCC1 Rabbit mAb

Catalog No.: A0662

Recombinant

Basic Information

Observed MW

49kDa

Calculated MW

45kDa

Category

SMab Recombinant Monoclonal Antibody

Applications

WB,IHC-P,ELISA

Cross-Reactivity

Human,Mouse,Rat

CloneNo number

ARC1834

Background

Enables several functions, including guanyl-nucleotide exchange factor activity; nucleosomal DNA binding activity; and protein heterodimerization activity. Involved in several processes, including G1/S transition of mitotic cell cycle; regulation of mitotic nuclear division; and spindle organization. Located in chromatin; cytoplasm; and nucleus. Part of protein-containing complex.

Recommended Dilutions

WB	1:500 - 1:2000
IHC-P	1:50 - 1:200

Immunogen Information

Gene ID

1104

Swiss Prot

P18754

Immunogen

A synthetic peptide corresponding to a sequence within amino acids 1-100 of human RCC1 (P18754).

Synonyms

CHC1; RCC1-I; RCC1

Contact



www.abclonal.com

Product Information

Source

Rabbit

Isotype

IgG

Purification

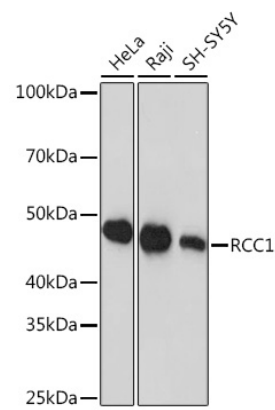
Affinity purification

Storage

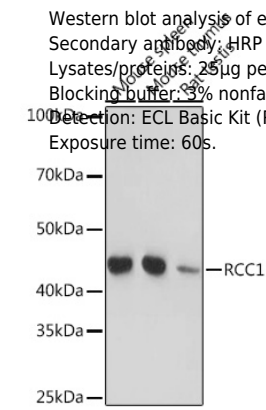
Store at -20°C. Avoid freeze / thaw cycles.

Buffer: PBS with 0.02% sodium azide,0.05% BSA,50% glycerol,pH7.3.

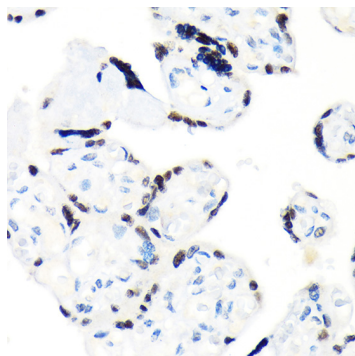
Validation Data



Western blot analysis of extracts of various cell lines, using RCC1 Rabbit mAb (A0662) at 1:1000 dilution.
Secondary antibody: HRP Goat Anti-Rabbit IgG (H+L) (A5014) at 1:10000 dilution.
Lysates/proteins: 25µg per lane.
Blocking buffer: 3% nonfat dry milk in TBST.
Detection: ECL Basic Kit (RM00020).
Exposure time: 10s.



Western blot analysis of extracts of various cell lines, using RCC1 Rabbit mAb (A0662) at 1:1000 dilution.
Secondary antibody: HRP Goat Anti-Rabbit IgG (H+L) (A5014) at 1:10000 dilution.
Lysates/proteins: 25µg per lane.
Blocking buffer: 3% nonfat dry milk in TBST.
Detection: ECL Basic Kit (RM00020).
Exposure time: 60s.



Immunohistochemistry analysis of paraffin-embedded human placenta using RCC1 Rabbit mAb (A0662) at dilution of 1:100 (40x lens). Perform microwave antigen retrieval with 10 mM Tris/EDTA buffer pH 9.0 before commencing with IHC staining protocol.