

A0656

Leader in Biomolecular Solutions for Life Science



CaMKII delta Rabbit pAb

Catalog No.: A0656

3 Publications

Basic Information

Observed MW

50kDa

Calculated MW

56kDa

Category

Polyclonal Antibody

Applications

WB, ELISA

Cross-Reactivity

Mouse

Background

The product of this gene belongs to the serine/threonine protein kinase family and to the Ca(2+)/calmodulin-dependent protein kinase subfamily. Calcium signaling is crucial for several aspects of plasticity at glutamatergic synapses. In mammalian cells, the enzyme is composed of four different chains: alpha, beta, gamma, and delta. The product of this gene is a delta chain. Alternative splicing results in multiple transcript variants encoding distinct isoforms. Distinct isoforms of this chain have different expression patterns.

Recommended Dilutions

WB 1:500 - 1:1000

Immunogen Information

Gene ID

817

Swiss Prot

Q13557

Immunogen

Recombinant fusion protein containing a sequence corresponding to amino acids 1-260 of human CaMKII delta (NP_742125.1).

Synonyms

CAMKD; CaMKII delta

Contact



www.abclonal.com

Product Information

Source

Rabbit

Isotype

IgG

Purification

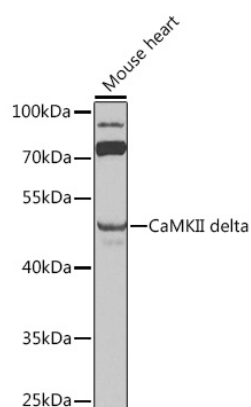
Affinity purification

Storage

Store at -20°C. Avoid freeze / thaw cycles.

Buffer: PBS with 0.02% sodium azide, 50% glycerol, pH 7.3.

Validation Data



Western blot analysis of lysates from mouse heart, using CaMKII delta Rabbit pAb (A0656) at 1:1000 dilution. Secondary antibody: HRP Goat Anti-Rabbit IgG (H+L) (AS014) at 1:10000 dilution. Lysates/proteins: 25µg per lane. Blocking buffer: 3% nonfat dry milk in TBST. Detection: ECL Enhanced Kit (RM00021). Exposure time: 90s.