

A0629

Leader in Biomolecular Solutions for Life Science



## TCL1A Rabbit pAb

Catalog No.: A0629

### Basic Information

**Observed MW**

16kDa

**Calculated MW**

13kDa

**Category**

Polyclonal Antibody

**Applications**

WB, ELISA

**Cross-Reactivity**

Human

### Background

Overexpression of the TCL1 gene in humans has been implicated in the development of mature T cell leukemia, in which chromosomal rearrangements bring the TCL1 gene in close proximity to the T-cell antigen receptor (TCR)-alpha (MIM 186880) or TCR-beta (MIM 186930) regulatory elements (summarized by Virgilio et al., 1998 [PubMed 9520462]). In normal T cells TCL1 is expressed in CD4-/CD8- cells, but not in cells at later stages of differentiation. TCL1 functions as a coactivator of the cell survival kinase AKT (MIM 164730) (Laine et al., 2000 [PubMed 10983986]).

### Recommended Dilutions

WB 1:500 - 1:2000

### Immunogen Information

**Gene ID**

8115

**Swiss Prot**

P56279

**Immunogen**

Recombinant fusion protein containing a sequence corresponding to amino acids 1-114 of human TCL1A (NP\_001092195.1).

**Synonyms**

TCL1; TCL1A

### Contact



[www.abclonal.com](http://www.abclonal.com)

### Product Information

**Source**

Rabbit

**Isotype**

IgG

**Purification**

Affinity purification

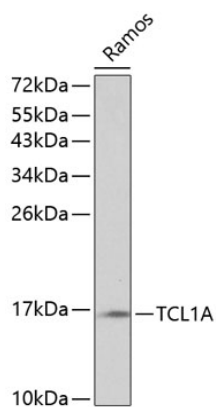
**Storage**

Store at -20°C. Avoid freeze / thaw cycles.

Buffer: PBS with 0.02% sodium azide, 50% glycerol, pH 7.3.

## Validation Data

---



Western blot analysis of extracts of Ramos cells, using TCL1A antibody (A0629) at 1:1000 dilution.  
Secondary antibody: HRP Goat Anti-Rabbit IgG (H+L) (A5014) at 1:10000 dilution.  
Lysates/proteins: 25µg per lane.  
Blocking buffer: 3% nonfat dry milk in TBST.