

A0628

Leader in Biomolecular Solutions for Life Science



## YES1 Rabbit pAb

Catalog No.: A0628

1 Publications

### Basic Information

#### Observed MW

61kDa

#### Calculated MW

61kDa

#### Category

Mouse Monoclonal Antibody

#### Applications

WB,IF/ICC,ELISA

#### Cross-Reactivity

Human,Mouse

### Background

This gene is the cellular homolog of the Yamaguchi sarcoma virus oncogene. The encoded protein has tyrosine kinase activity and belongs to the src family of proteins. This gene lies in close proximity to thymidylate synthase gene on chromosome 18, and a corresponding pseudogene has been found on chromosome 22.

### Recommended Dilutions

WB	1:500 - 1:1000
IF/ICC	1:50 - 1:200

### Immunogen Information

#### Gene ID

7525

#### Swiss Prot

P07947

#### Immunogen

Recombinant fusion protein containing a sequence corresponding to amino acids 1-250 of human YES1 (NP\_005424.1).

#### Synonyms

Yes; c-yes; HsT441; P61-YES; YES1

### Contact



[www.abclonal.com](http://www.abclonal.com)

### Product Information

#### Source

Rabbit

#### Isotype

IgG

#### Purification

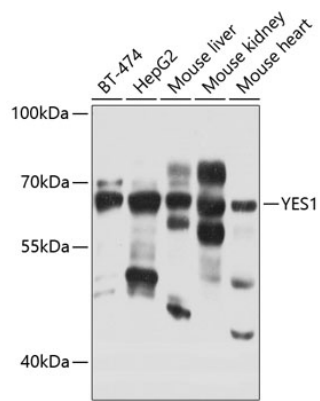
Affinity purification

#### Storage

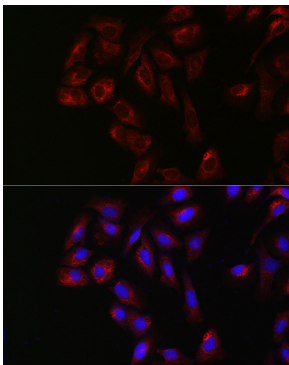
Store at -20°C. Avoid freeze / thaw cycles.

Buffer: PBS with 0.02% sodium azide,50% glycerol,pH7.3.

## Validation Data



Western blot analysis of extracts of various cell lines, using YES1 antibody (A0628) at 1:1000 dilution.  
Secondary antibody: HRP Goat Anti-Rabbit IgG (H+L) (A5014) at 1:10000 dilution.  
Lysates/proteins: 25µg per lane.  
Blocking buffer: 3% nonfat dry milk in TBST.  
Detection: ECL Basic Kit (RM00020).  
Exposure time: 20s.



Immunofluorescence analysis of U2OS cells using YES1 Rabbit pAb (A0628) at dilution of 1:200 (40x lens). Blue: DAPI for nuclear staining.