

A0595

Leader in Biomolecular Solutions for Life Science



DYRK1A Rabbit pAb

Catalog No.: A0595

5 Publications

Basic Information

Observed MW

70kDa

Calculated MW

86kDa

Category

Polyclonal Antibody

Applications

WB, ELISA

Cross-Reactivity

Human

Background

This gene encodes a member of the Dual-specificity tyrosine phosphorylation-regulated kinase (DYRK) family. This member contains a nuclear targeting signal sequence, a protein kinase domain, a leucine zipper motif, and a highly conservative 13-consecutive-histidine repeat. It catalyzes its autophosphorylation on serine/threonine and tyrosine residues. It may play a significant role in a signaling pathway regulating cell proliferation and may be involved in brain development. This gene is a homolog of *Drosophila* *mnb* (minibrain) gene and rat *Dyrk* gene. It is localized in the Down syndrome critical region of chromosome 21, and is considered to be a strong candidate gene for learning defects associated with Down syndrome. Alternative splicing of this gene generates several transcript variants differing from each other either in the 5' UTR or in the 3' coding region. These variants encode at least five different isoforms.

Recommended Dilutions

WB 1:500 - 1:1000

Immunogen Information

Gene ID

1859

Swiss Prot

Q13627

Immunogen

Recombinant fusion protein containing a sequence corresponding to amino acids 624-763 of human DYRK1A (NP_001387.2).

Synonyms

MNB; DYRK; HP86; MNBH; MRD7; DYRK1; DYRK1A

Contact



www.abclonal.com

Product Information

Source

Rabbit

Isotype

IgG

Purification

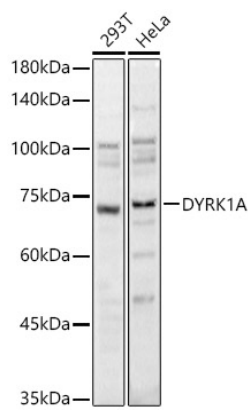
Affinity purification

Storage

Store at -20°C. Avoid freeze / thaw cycles.

Buffer: PBS with 0.02% sodium azide, 50% glycerol, pH 7.3.

Validation Data



Western blot analysis of extracts of various cell lines, using DYRK1A antibody (A0595) at 1:1000 dilution.
Secondary antibody: HRP Goat Anti-Rabbit IgG (H+L) (A5014) at 1:10000 dilution.
Lysates/proteins: 25µg per lane.
Blocking buffer: 3% nonfat dry milk in TBST.
Detection: ECL Basic Kit (RM00020).
Exposure time: 10s.