

A0534

Leader in Biomolecular Solutions for Life Science



CDC25B Rabbit pAb

Catalog No.: A0534

1 Publications

Basic Information

Observed MW

62kDa

Calculated MW

65kDa

Category

Polyclonal Antibody

Applications

WB, ELISA

Cross-Reactivity

Human

Background

CDC25B is a member of the CDC25 family of phosphatases. CDC25B activates the cyclin dependent kinase CDC2 by removing two phosphate groups and it is required for entry into mitosis. CDC25B shuttles between the nucleus and the cytoplasm due to nuclear localization and nuclear export signals. The protein is nuclear in the M and G1 phases of the cell cycle and moves to the cytoplasm during S and G2. CDC25B has oncogenic properties, although its role in tumor formation has not been determined. Multiple transcript variants for this gene exist.

Recommended Dilutions

WB 1:500 - 1:1000

Immunogen Information

Gene ID

994

Swiss Prot

P30305

Immunogen

Recombinant fusion protein containing a sequence corresponding to amino acids 1-250 of human CDC25B (NP_068659.1).

Synonyms

CDC25B

Contact



www.abclonal.com

Product Information

Source

Rabbit

Isotype

IgG

Purification

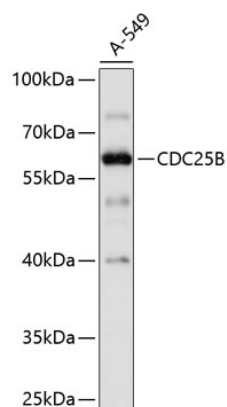
Affinity purification

Storage

Store at -20°C. Avoid freeze / thaw cycles.

Buffer: PBS with 0.01% thimerosal, 50% glycerol, pH 7.3.

Validation Data



Western blot analysis of lysates from A-549 cells, using CDC25B Rabbit pAb (A0534) at 1:1000 dilution.
Secondary antibody: HRP Goat Anti-Rabbit IgG (H+L) (A5014) at 1:10000 dilution.
Lysates/proteins: 25µg per lane.
Blocking buffer: 3% nonfat dry milk in TBST.
Detection: ECL Basic Kit (RM00020).
Exposure time: 5s.