

A0527

Leader in Biomolecular Solutions for Life Science



## NUMA1 Rabbit pAb

Catalog No.: A0527

3 Publications

### Basic Information

#### Observed MW

238kDa

#### Calculated MW

238kDa

#### Category

Polyclonal Antibody

#### Applications

WB, IHC-P, IF/ICC, ELISA

#### Cross-Reactivity

Human, Mouse, Rat

### Background

This gene encodes a large protein that forms a structural component of the nuclear matrix. The encoded protein interacts with microtubules and plays a role in the formation and organization of the mitotic spindle during cell division. Chromosomal translocation of this gene with the RARA (retinoic acid receptor, alpha) gene on chromosome 17 have been detected in patients with acute promyelocytic leukemia. Alternative splicing results in multiple transcript variants.

### Recommended Dilutions

WB	1:200 - 1:1000
IHC-P	1:50 - 1:100
IF/ICC	1:50 - 1:100

### Immunogen Information

#### Gene ID

4926

#### Swiss Prot

Q14980

#### Immunogen

Recombinant fusion protein containing a sequence corresponding to amino acids 1-309 of human NUMA1 (NP\_006176.2).

#### Synonyms

NUMA; NMP-22; NUMA1

### Contact



[www.abclonal.com](http://www.abclonal.com)

### Product Information

#### Source

Rabbit

#### Isotype

IgG

#### Purification

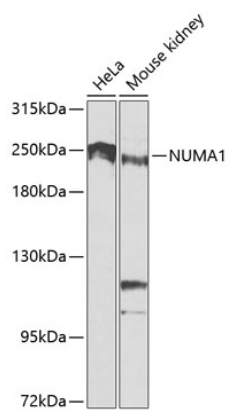
Affinity purification

#### Storage

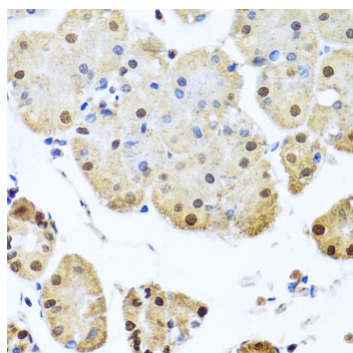
Store at -20°C. Avoid freeze / thaw cycles.

Buffer: PBS with 0.02% sodium azide, 50% glycerol, pH 7.3.

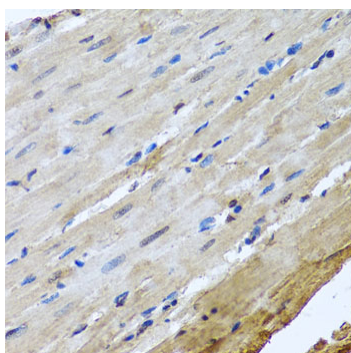
## Validation Data



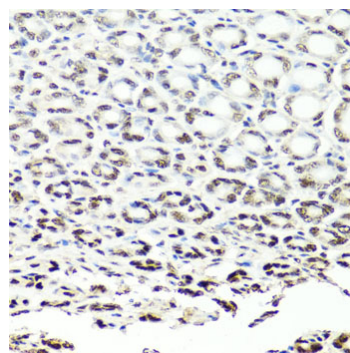
Western blot analysis of extracts of various cell lines, using NUMA1 antibody (A0527) at 1:1000 dilution.  
 Secondary antibody: HRP Goat Anti-Rabbit IgG (H+L) (A5014) at 1:10000 dilution.  
 Lysates/proteins: 25µg per lane.  
 Blocking buffer: 3% nonfat dry milk in TBST.  
 Detection: ECL Basic Kit (RM00020).  
 Exposure time: 90s.



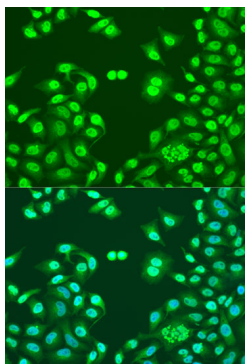
Immunohistochemistry analysis of paraffin-embedded human stomach using NUMA1 antibody (A0527) at dilution of 1:100 (40x lens). Perform microwave antigen retrieval with 10 mM PBS buffer pH 7.2 before commencing with IHC staining protocol.



Immunohistochemistry analysis of paraffin-embedded rat heart using NUMA1 antibody (A0527) at dilution of 1:100 (40x lens). Perform microwave antigen retrieval with 10 mM PBS buffer pH 7.2 before commencing with IHC staining protocol.



Immunohistochemistry analysis of paraffin-embedded mouse stomach using NUMA1 antibody (A0527) at dilution of 1:100 (40x lens). Perform microwave antigen retrieval with 10 mM PBS buffer pH 7.2 before commencing with IHC staining protocol.



Immunofluorescence analysis of U2OS cells using NUMA1 antibody (A0527) at dilution of 1:100. Blue: DAPI for nuclear staining.