

GATA1 Rabbit pAb

Catalog No.: A0475 **1 Publications**

Basic Information

Observed MW

50kDa

Calculated MW

43kDa

Category

Primary antibody

Applications

WB

Cross-Reactivity

Mouse

Background

This gene encodes a protein which belongs to the GATA family of transcription factors. The protein plays an important role in erythroid development by regulating the switch of fetal hemoglobin to adult hemoglobin. Mutations in this gene have been associated with X-linked dyserythropoietic anemia and thrombocytopenia.

Recommended Dilutions

WB 1:500 - 1:2000

Immunogen Information

Gene ID

2623

Swiss Prot

P15976

Immunogen

A synthetic peptide corresponding to a sequence within amino acids 55-155 of human GATA1 (NP_002040.1).

Synonyms

GF1; GF-1; NFE1; XLTT; ERYF1; NF-E1; XLANP; XLTDA; GATA-1; HAEADA; GATA1

Contact

 | www.abclonal.com

Product Information

Source

Rabbit

Isotype

IgG

Purification

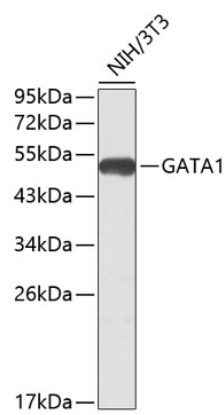
Affinity purification

Storage

Store at -20°C. Avoid freeze / thaw cycles.

Buffer: PBS with 0.02% sodium azide, 50% glycerol, pH7.3.

Validation Data



Western blot analysis of lysates from NIH/3T3 cells, using GATA1 Rabbit pAb (A0475).
Secondary antibody: HRP Goat Anti-Rabbit IgG (H+L) (A5014) at 1:10000 dilution.
Lysates/proteins: 25µg per lane.
Blocking buffer: 3% nonfat dry milk in TBST.