

A0422

Leader in Biomolecular Solutions for Life Science



## IKK $\alpha$ Rabbit pAb

Catalog No.: A0422

1 Publications

### Basic Information

**Observed MW**

85kDa

**Calculated MW**

85kDa

**Category**

Polyclonal Antibody

**Applications**

WB,IF/ICC,ELISA

**Cross-Reactivity**

Human,Mouse

### Background

This gene encodes a member of the serine/threonine protein kinase family. The encoded protein, a component of a cytokine-activated protein complex that is an inhibitor of the essential transcription factor NF-kappa-B complex, phosphorylates sites that trigger the degradation of the inhibitor via the ubiquination pathway, thereby activating the transcription factor.

### Recommended Dilutions

WB 1:500 - 1:1000

### Immunogen Information

**Gene ID**

1147

**Swiss Prot**

O15111

**Immunogen**

Recombinant fusion protein containing a sequence corresponding to amino acids 600-700 of human IKK $\alpha$  (NP\_001269.3).

**Synonyms**

BPS2; IKK1; IKKA; IKBKA; TCF16; NFKBIKA; IKK-alpha; IKK $\alpha$

### Contact



[www.abclonal.com](http://www.abclonal.com)

### Product Information

**Source**

Rabbit

**Isotype**

IgG

**Purification**

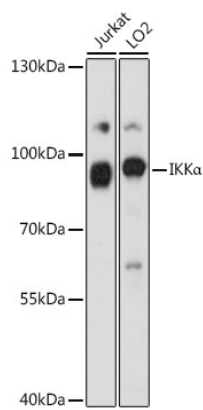
Affinity purification

**Storage**

Store at -20°C. Avoid freeze / thaw cycles.

Buffer: PBS with 0.01% thimerosal, 50% glycerol, pH7.3.

# Validation Data



Western blot analysis of various lysates using IKKα Rabbit pAb (A0422) at 1:1000 dilution.  
Secondary antibody: HRP Goat Anti-Rabbit IgG (H+L) (AS014) at 1:10000 dilution.  
Lysates/proteins: 25μg per lane.  
Blocking buffer: 3% nonfat dry milk in TBST.  
Detection: ECL Basic Kit (RM00020).  
Exposure time: 30s.