

A0321

Leader in Biomolecular Solutions for Life Science



Progesterone Receptor Rabbit pAb

Catalog No.: A0321 **2 Publications**

Basic Information

Observed MW

118kDa

Calculated MW

99kDa

Category

Mouse Monoclonal Antibody

Applications

WB,IHC-P,ELISA

Cross-Reactivity

Human,Mouse,Rat

Background

This gene encodes a member of the steroid receptor superfamily. The encoded protein mediates the physiological effects of progesterone, which plays a central role in reproductive events associated with the establishment and maintenance of pregnancy. This gene uses two distinct promoters and translation start sites in the first exon to produce several transcript variants, both protein coding and non-protein coding. Two of the isoforms (A and B) are identical except for an additional 165 amino acids found in the N-terminus of isoform B and mediate their own response genes and physiologic effects with little overlap.

Recommended Dilutions

WB	1:500 - 1:1000
IHC-P	1:50 - 1:200

Immunogen Information

Gene ID

5241

Swiss Prot

P06401

Immunogen

Recombinant fusion protein containing a sequence corresponding to amino acids 1-250 of human Progesterone Receptor (NP_000917.3).

Synonyms

PR; NR3C3; Progesterone Receptor

Contact



www.abclonal.com

Product Information

Source

Rabbit

Isotype

IgG

Purification

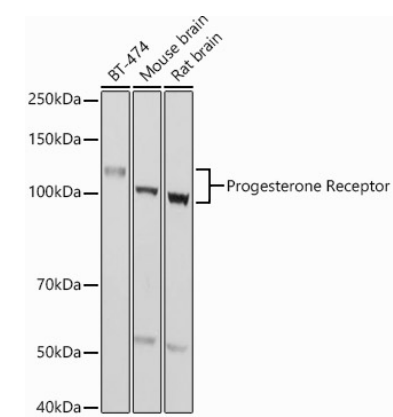
Affinity purification

Storage

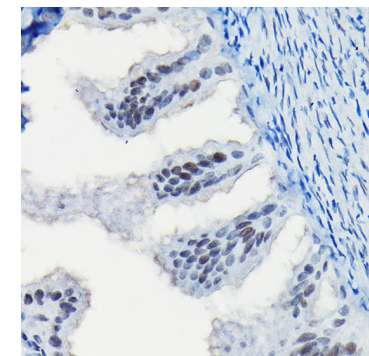
Store at -20°C. Avoid freeze / thaw cycles.

Buffer: PBS with 0.01% thimerosal, 50% glycerol, pH7.3.

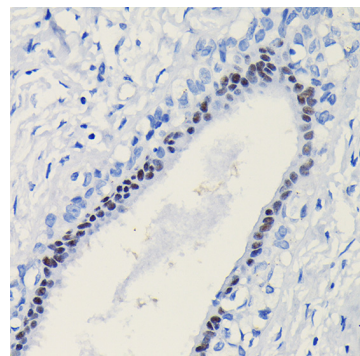
Validation Data



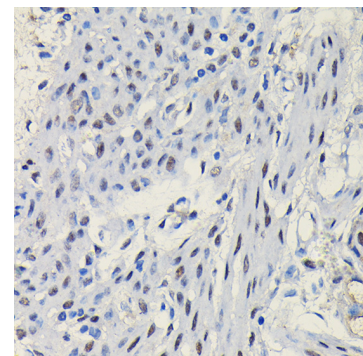
Western blot analysis of various lysates using Progesterone Receptor Rabbit pAb (A0321) at 1:1000 dilution.
Secondary antibody: HRP Goat Anti-Rabbit IgG (H+L) (AS014) at 1:10000 dilution.
Lysates/proteins: 25µg per lane.
Blocking buffer: 3% nonfat dry milk in TBST.
Detection: ECL Basic Kit (RM00020).
Exposure time: 1s.



Immunohistochemistry analysis of Progesterone Receptor in paraffin-embedded rat fallopian tube using Progesterone Receptor Rabbit pAb (A0321) at dilution of 1:100 (40x lens). Perform high pressure antigen retrieval with 10 mM citrate buffer pH 6.0 before commencing with IHC staining protocol.



Immunohistochemistry analysis of Progesterone Receptor in paraffin-embedded human breast cancer using Progesterone Receptor Rabbit pAb (A0321) at dilution of 1:100 (40x lens). Perform high pressure antigen retrieval with 10 mM citrate buffer pH 6.0 before commencing with IHC staining protocol.



Immunohistochemistry analysis of Progesterone Receptor in paraffin-embedded mouse uterus using Progesterone Receptor Rabbit pAb (A0321) at dilution of 1:100 (40x lens). Perform high pressure antigen retrieval with 10 mM citrate buffer pH 6.0 before commencing with IHC staining protocol.