

A0293

Leader in Biomolecular Solutions for Life Science



## CARD8 Rabbit pAb

Catalog No.: A0293

### Basic Information

**Observed MW**

60kDa

**Calculated MW**

61kDa

**Category**

Polyclonal Antibody

**Applications**

WB, ELISA

**Cross-Reactivity**

Human

### Background

The protein encoded by this gene belongs to the caspase recruitment domain (CARD)-containing family of proteins, which are involved in pathways leading to activation of caspases or nuclear factor kappa-B (NFKB). This protein may be a component of the inflammasome, a protein complex that plays a role in the activation of proinflammatory caspases. It is thought that this protein acts as an adaptor molecule that negatively regulates NFKB activation, CASP1-dependent IL1B secretion, and apoptosis. Polymorphisms in this gene may be associated with a susceptibility to rheumatoid arthritis. Alternatively spliced transcript variants have been described for this gene.

### Recommended Dilutions

WB 1:500 - 1:2000

### Immunogen Information

**Gene ID**

22900

**Swiss Prot**

Q9Y2G2

**Immunogen**

Recombinant fusion protein containing a sequence corresponding to amino acids 1-200 of human CARD8 (NP\_003796.1).

**Synonyms**

NDPP; DACAR; DAKAR; NDPP1; TUCAN; CARDINAL; CARD8

### Contact



[www.abclonal.com](http://www.abclonal.com)

### Product Information

**Source**

Rabbit

**Isotype**

IgG

**Purification**

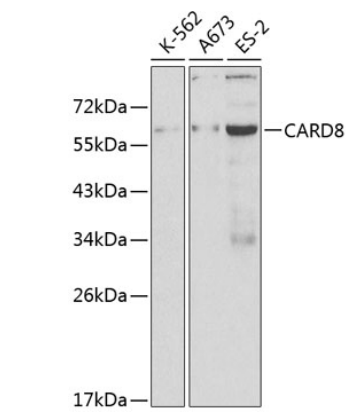
Affinity purification

**Storage**

Store at -20°C. Avoid freeze / thaw cycles.

Buffer: PBS with 0.02% sodium azide, 50% glycerol, pH 7.3.

Validation Data



Western blot analysis of extracts of various cell lines, using CARD8 antibody (A0293) at 1:1000 dilution.  
Secondary antibody: HRP Goat Anti-Rabbit IgG (H+L) (A5014) at 1:10000 dilution.  
Lysates/proteins: 25µg per lane.  
Blocking buffer: 3% nonfat dry milk in TBST.