

MAPK8 Polyclonal Antibody

Catalog No.	A0288	Category	Polyclonal Antibodies
Applications	WB, IHC	Observed MW	50kDa
Cross-reactivity	Human, Mouse	Calculated MW	35kDa/44kDa/48kDa

Immunogen Information

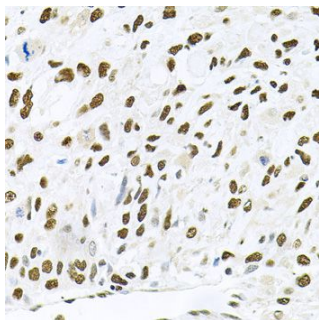
Immunogen	Recombinant fusion protein containing a sequence corresponding to amino acids 245-345 of human MAPK8 (NP_620635.1).
Gene ID	5599
Swiss prot	P45983
Synonyms	JNK;JNK-46;JNK1;JNK1A2;JNK21B1/2;PRKM8;SAPK1;SAPK1c

Product information

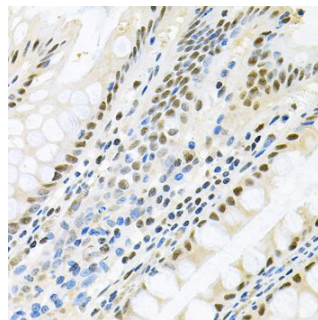
Source	Rabbit
Isotype	IgG
Purification method	Affinity purification
Storage	Store at -20°C. Avoid freeze / thaw cycles. Buffer: PBS with 0.02% sodium azide, 50% glycerol, pH7.3.

Background

The protein encoded by this gene is a member of the MAP kinase family. MAP kinases act as an integration point for multiple biochemical signals, and are involved in a wide variety of cellular processes such as proliferation, differentiation, transcription regulation and development. This kinase is activated by various cell stimuli, and targets specific transcription factors, and thus mediates immediate-early gene expression in response to cell stimuli. The activation of this kinase by tumor-necrosis factor alpha (TNF-alpha) is found to be required for TNF-alpha induced apoptosis. This kinase is also involved in UV radiation induced apoptosis, which is thought to be related to cytochrom c-mediated cell death pathway. Studies of the mouse counterpart of this gene suggested that this kinase play a key role in T cell proliferation, apoptosis and differentiation. Several alternatively spliced transcript variants encoding distinct isoforms have been reported.



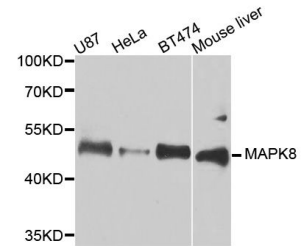
Immunohistochemistry of paraffin-embedded human lung cancer using MAPK8 antibody (A0288) at dilution of 1:100 (40x lens).



Immunohistochemistry of paraffin-embedded human colon using MAPK8 antibody (A0288) at dilution of 1:100 (40x lens).

Recommended Dilutions

WB	1:500 - 1:2000
IHC	1:100 - 1:200

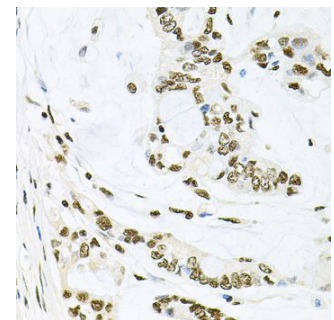


Western blot analysis of extracts of various cell lines, using MAPK8 antibody (A0288) at 1:1000 dilution. Secondary antibody: HRP Goat Anti-Rabbit IgG (H+L) (AS014) at 1:10000 dilution.

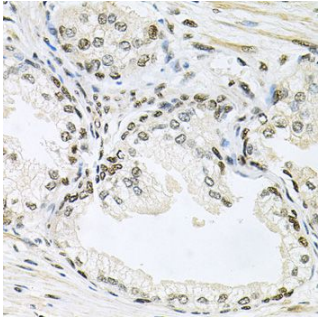
Lysates/proteins: 25ug per lane. Blocking buffer: 3% nonfat dry milk in TBST.

Detection: ECL Enhanced Kit (RM00021).

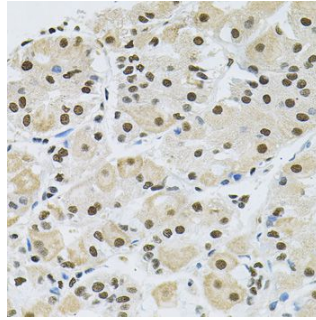
Exposure time: 30s.



Immunohistochemistry of paraffin-embedded human gastric cancer using MAPK8 antibody (A0288) at dilution of 1:100 (40x lens).



Immunohistochemistry of paraffin-embedded human prostate using MAPK8 antibody (A0288) at dilution of 1:100 (40x lens).



Immunohistochemistry of paraffin-embedded human stomach using MAPK8 antibody (A0288) at dilution of 1:100 (40x lens).