

A0282

Leader in Biomolecular Solutions for Life Science



## c-Abl Rabbit pAb

Catalog No.: A0282

2 Publications

### Basic Information

#### Observed MW

150kDa

#### Calculated MW

123kDa

#### Category

Polyclonal Antibody

#### Applications

WB, IHC-P, IF/ICC, ELISA

#### Cross-Reactivity

Human, Mouse, Rat

### Background

This gene is a protooncogene that encodes a protein tyrosine kinase involved in a variety of cellular processes, including cell division, adhesion, differentiation, and response to stress. The activity of the protein is negatively regulated by its SH3 domain, whereby deletion of the region encoding this domain results in an oncogene. The ubiquitously expressed protein has DNA-binding activity that is regulated by CDC2-mediated phosphorylation, suggesting a cell cycle function. This gene has been found fused to a variety of translocation partner genes in various leukemias, most notably the t(9;22) translocation that results in a fusion with the 5' end of the breakpoint cluster region gene (BCR; MIM:151410). Alternative splicing of this gene results in two transcript variants, which contain alternative first exons that are spliced to the remaining common exons.

### Recommended Dilutions

WB	1:100 - 1:500
IHC-P	1:50 - 1:200
IF/ICC	1:50 - 1:200

### Immunogen Information

#### Gene ID

25

#### Swiss Prot

P00519

#### Immunogen

Recombinant fusion protein containing a sequence corresponding to amino acids 1000-1130 of human c-Abl (NP\_005148.2).

#### Synonyms

ABL; JTK7; p150; c-ABL; v-abl; CHDSKM; c-ABL1; BCR-ABL; bcr/abl; c-Abl

### Contact



[www.abclonal.com](http://www.abclonal.com)

### Product Information

#### Source

Rabbit

#### Isotype

IgG

#### Purification

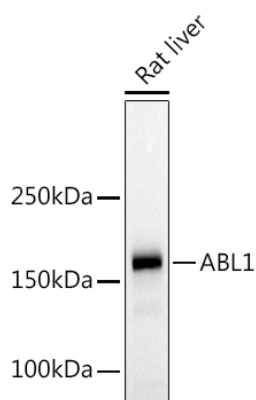
Affinity purification

#### Storage

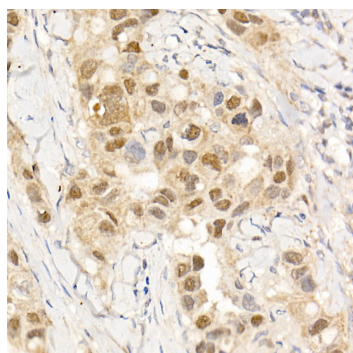
Store at -20°C. Avoid freeze / thaw cycles.

Buffer: PBS with 0.05% proclin300, 50% glycerol, pH7.3.

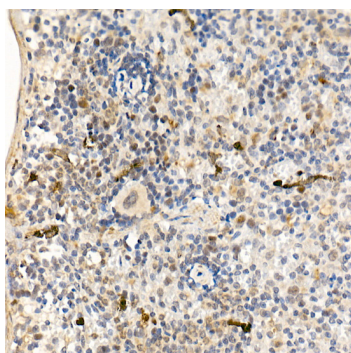
## Validation Data



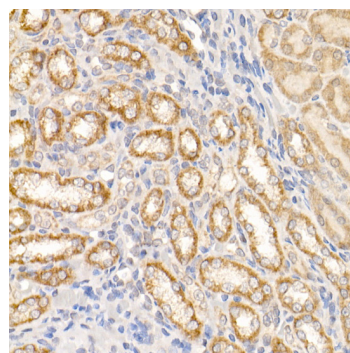
Western blot analysis of extracts of Rat liver, using c-Abl Rabbit pAb (A0282) at 1:500 dilution.  
Secondary antibody: HRP Goat Anti-Rabbit IgG (H+L) (A5014) at 1:10000 dilution.  
Lysates/proteins: 25µg per lane.  
Blocking buffer: 3% nonfat dry milk in TBST.  
Detection: ECL Basic Kit (RM00020).  
Exposure time: 180s.



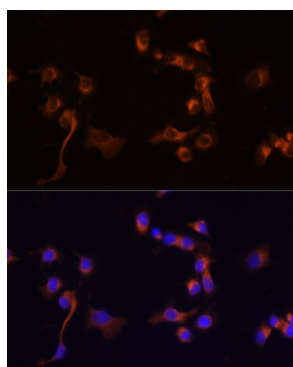
Immunohistochemistry analysis of paraffin-embedded human breast cancer using c-Abl Rabbit pAb (A0282) at dilution of 1:20 (40x lens). Perform high pressure antigen retrieval with 10 mM citrate buffer pH 6.0 before commencing with IHC staining protocol.



Immunohistochemistry analysis of paraffin-embedded mouse spleen using c-Abl Rabbit pAb (A0282) at dilution of 1:20 (40x lens). Perform high pressure antigen retrieval with 10 mM citrate buffer pH 6.0 before commencing with IHC staining protocol.



Immunohistochemistry analysis of paraffin-embedded rat kidney using c-Abl Rabbit pAb (A0282) at dilution of 1:20 (40x lens). Perform high pressure antigen retrieval with 10 mM citrate buffer pH 6.0 before commencing with IHC staining protocol.



Immunofluorescence analysis of A431 cells using c-Abl antibody (A0282) at dilution of 1:100 (40x lens). Blue: DAPI for nuclear staining.