

NUDT6 Rabbit pAb

Catalog No.: A0260

Basic Information

Observed MW

47kDa

Calculated MW

36kDa

Category

Primary antibody

Applications

ELISA, WB, IF/ICC

Cross-Reactivity

Human

Background

This gene overlaps and lies on the opposite strand from FGF2 gene, and is thought to be the FGF2 antisense gene. The two genes are independently transcribed, and their expression shows an inverse relationship, suggesting that this antisense transcript may regulate FGF2 expression. This gene has also been shown to have hormone-regulatory and antiproliferative actions in the pituitary that are independent of FGF2 expression. Alternatively spliced transcript variants encoding different isoforms have been found for this gene.

Recommended Dilutions

WB	1:500 - 1:2000
IF/ICC	1:50 - 1:200

Immunogen Information

Gene ID

11162

Swiss Prot

P53370

Immunogen

Recombinant fusion protein containing a sequence corresponding to amino acids 121-316 of human NUDT6 (NP_009014.2).

Synonyms

GFG1; GFG-1; ASFGF2; FGF-AS; FGF2AS; NUDT6

Contact

 | www.abclonal.com

Product Information

Source

Rabbit

Isotype

IgG

Purification

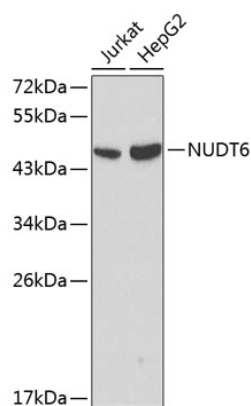
Affinity purification

Storage

Store at -20°C. Avoid freeze / thaw cycles.

Buffer: PBS with 0.01% thimerosal, 50% glycerol, pH7.3.

Validation Data

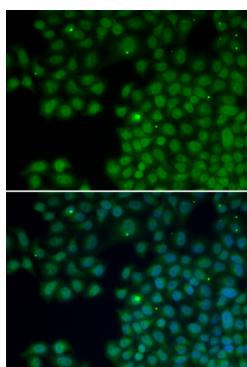


Western blot analysis of extracts of various cell lines, using NUDT6 antibody (A0260) at 1:1000 dilution.

Secondary antibody: HRP Goat Anti-Rabbit IgG (H+L) (A5014) at 1:10000 dilution.

Lysates/proteins: 25µg per lane.

Blocking buffer: 3% nonfat dry milk in TBST.



Immunofluorescence analysis of HeLa cells using NUDT6 antibody (A0260). Blue: DAPI for nuclear staining.