

# Cytokeratin 20 (KRT20) Rabbit pAb

Catalog No.: A0248

## Basic Information

**Observed MW**

43kDa

**Calculated MW**

48kDa

**Category**

Primary antibody

**Applications**

ELISA, WB, IF/ICC

**Cross-Reactivity**

Human, Mouse

## Background

The protein encoded by this gene is a member of the keratin family. The keratins are intermediate filament proteins responsible for the structural integrity of epithelial cells and are subdivided into cytokeratins and hair keratins. The type I cytokeratins consist of acidic proteins which are arranged in pairs of heterotypic keratin chains. This cytokeratin is a major cellular protein of mature enterocytes and goblet cells and is specifically expressed in the gastric and intestinal mucosa. The type I cytokeratin genes are clustered in a region of chromosome 17q12-q21.

## Recommended Dilutions

**WB** 1:500 - 1:2000**IF/ICC** 1:50 - 1:200

## Immunogen Information

**Gene ID**

54474

**Swiss Prot**

P35900

**Immunogen**

Recombinant fusion protein containing a sequence corresponding to amino acids 245-424 of human Cytokeratin 20 (Cytokeratin 20 (KRT20)) (NP\_061883.1).

**Synonyms**

K20; CD20; CK20; CK-20; KRT21; Cytokeratin 20 (KRT20)

## Contact

 | [www.abclonal.com](http://www.abclonal.com)

## Product Information

**Source**

Rabbit

**Isotype**

IgG

**Purification**

Affinity purification

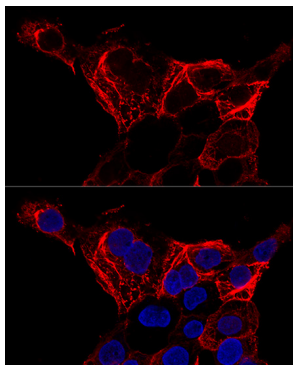
**Storage**

Store at -20°C. Avoid freeze / thaw cycles.

Buffer: PBS with 0.02% sodium azide, 50% glycerol, pH7.3.

## Validation Data

---



Confocal immunofluorescence analysis of A-431 cells using Cytokeratin 20 (Cytokeratin 20 (KRT20)) antibody (A0248) at dilution of 1:200. Blue: DAPI for nuclear staining.