

## [KO Validated] HDAC1 Rabbit pAb

<b>Catalog No.</b>	A0238	<b>Category</b>	Polyclonal Antibodies
<b>Applications</b>	WB, IHC, IF, IP	<b>Observed MW</b>	62kDa
<b>Cross-reactivity</b>	Human, Mouse, Rat	<b>Calculated MW</b>	55kDa

### Immunogen Information

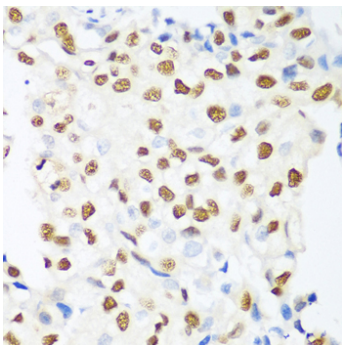
<b>Immunogen</b>	Recombinant fusion protein containing a sequence corresponding to amino acids 393-482 of human HDAC1 (NP_004955.2).
<b>Gene ID</b>	3065
<b>Swiss prot</b>	Q13547
<b>Synonyms</b>	GON-10;HD1;RPD3;RPD3L1;HDAC1

### Product information

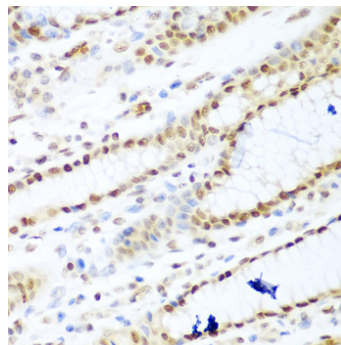
<b>Source</b>	Rabbit
<b>Isotype</b>	IgG
<b>Purification method</b>	Affinity purification
<b>Storage</b>	Store at -20°C. Avoid freeze / thaw cycles. Buffer: PBS with 0.02% sodium azide, 50% glycerol, pH7.3.

### Background

Histone acetylation and deacetylation, catalyzed by multisubunit complexes, play a key role in the regulation of eukaryotic gene expression. The protein encoded by this gene belongs to the histone deacetylase/acuc/apha family and is a component of the histone deacetylase complex. It also interacts with retinoblastoma tumor-suppressor protein and this complex is a key element in the control of cell proliferation and differentiation. Together with metastasis-associated protein-2, it deacetylates p53 and modulates its effect on cell growth and apoptosis.



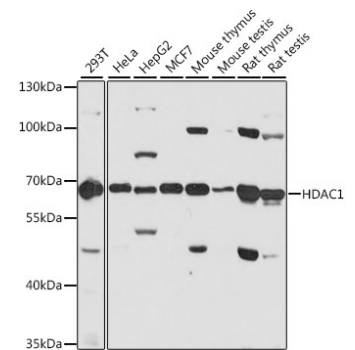
Immunohistochemistry of paraffin-embedded human prostate cancer using HDAC1 antibody (A0238) at dilution of 1:100 (40x lens).



Immunohistochemistry of paraffin-embedded human stomach using HDAC1 antibody (A0238) at dilution of 1:100 (40x lens).

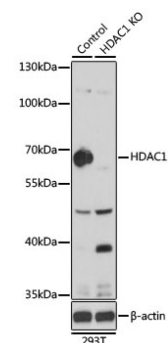
### Recommended Dilutions

WB	1:500 - 1:2000
IHC	1:100 - 1:200
IF	1:50 - 1:100
IP	1:50 - 1:100

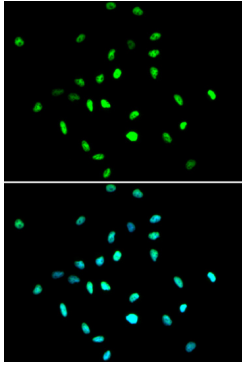


Western blot analysis of extracts of various cell lines, using HDAC1 antibody (A0238) at 1:1000 dilution. Secondary antibody: HRP Goat Anti-Rabbit IgG (H+L) (AS014) at 1:10000 dilution.

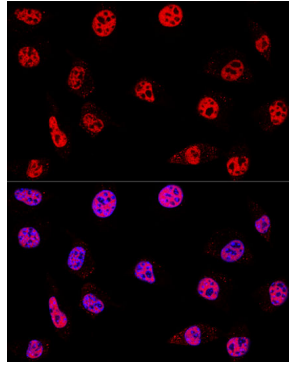
Lysates/proteins: 25ug per lane.  
Blocking buffer: 3% nonfat dry milk in TBST.  
Detection: ECL Basic Kit (RM00020).  
Exposure time: 60s.



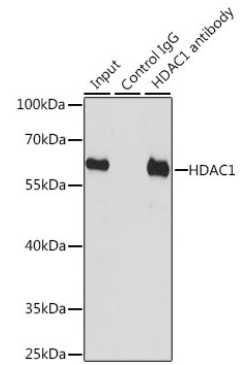
Western blot analysis of extracts from normal (control) and HDAC1 knockout (KO) 293T cells, using HDAC1 antibody (A0238) at 1:1000 dilution. Secondary antibody: HRP Goat Anti-Rabbit IgG (H+L) (AS014) at 1:10000 dilution.  
Lysates/proteins: 25ug per lane.  
Blocking buffer: 3% nonfat dry milk in TBST.  
Detection: ECL Basic Kit (RM00020).  
Exposure time: 60s.



Immunofluorescence analysis of A549 cells using HDAC1 antibody (A0238). Blue: DAPI for nuclear staining.



Confocal immunofluorescence analysis of L929 cells using HDAC1 Polyclonal Antibody (A0238) at dilution of 1:200. Blue: DAPI for nuclear staining.



Immunoprecipitation analysis of 200ug extracts of HT-29 cells, using 3 ug HDAC1 antibody (A0238). Western blot was performed from the immunoprecipitate using HDAC1 antibody (A0238) at a dilution of 1:1000.