

A0235

Leader in Biomolecular Solutions for Life Science



FGF2 Rabbit pAb

Catalog No.: A0235

13 Publications

Basic Information

Observed MW

26kDa

Calculated MW

31kDa

Category

Polyclonal Antibody

Applications

WB,IHC-P,IF/ICC,ELISA

Cross-Reactivity

Human,Mouse,Rat

Background

The protein encoded by this gene is a member of the fibroblast growth factor (FGF) family. FGF family members bind heparin and possess broad mitogenic and angiogenic activities. This protein has been implicated in diverse biological processes, such as limb and nervous system development, wound healing, and tumor growth. The mRNA for this gene contains multiple polyadenylation sites, and is alternatively translated from non-AUG (CUG) and AUG initiation codons, resulting in five different isoforms with distinct properties. The CUG-initiated isoforms are localized in the nucleus and are responsible for the intracrine effect, whereas, the AUG-initiated form is mostly cytosolic and is responsible for the paracrine and autocrine effects of this FGF.

Recommended Dilutions

WB	1:500 - 1:1000
IHC-P	1:50 - 1:200
IF/ICC	1:50 - 1:200

Immunogen Information

Gene ID

2247

Swiss Prot

P09038

Immunogen

Recombinant fusion protein containing a sequence corresponding to amino acids 143-288 of human FGF2 (NP_001997.5).

Synonyms

BFGF; FGFB; FGF-2; HBGF-2; FGF2

Contact



www.abclonal.com

Product Information

Source

Rabbit

Isotype

IgG

Purification

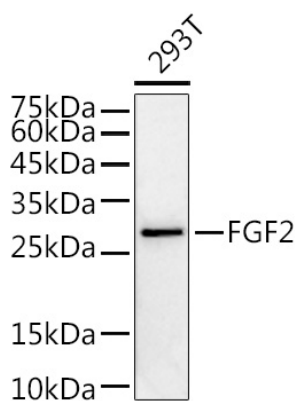
Affinity purification

Storage

Store at -20°C. Avoid freeze / thaw cycles.

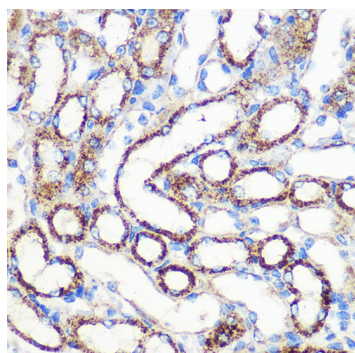
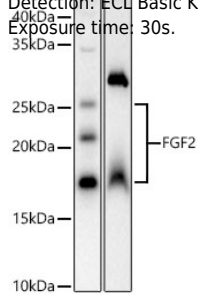
Buffer: PBS with 0.02% sodium azide,50% glycerol,pH7.3.

Validation Data

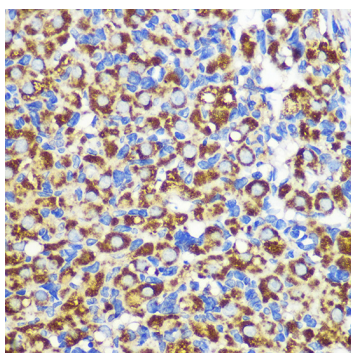


Western blot analysis of extracts of 293T cells, using FGF2 antibody (A0235) at 1:1000 dilution.
Secondary antibody: HRP Goat Anti-Rabbit IgG (H+L) (A5014) at 1:10000 dilution.
Lysates/proteins: 25µg per lane.
Blocking buffer: 3% nonfat dry milk in TBST.
Detection: ECL Enhanced Kit (RM00021).
Exposure time: 180s.

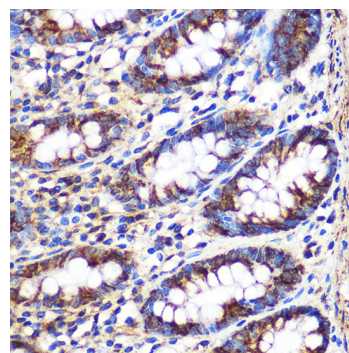
Western blot analysis of extracts of various cell lines, using FGF2 antibody (A0235) at 1:2000 dilution.
Secondary antibody: HRP Goat Anti-Rabbit IgG (H+L) (A5014) at 1:10000 dilution.
Lysates/proteins: 25µg per lane.
Blocking buffer: 3% nonfat dry milk in TBST.
Detection: ECL Basic Kit (RM00020).
Exposure time: 30s.



Immunohistochemistry analysis of paraffin-embedded Mouse kidney using FGF2 Rabbit pAb (A0235) at dilution of 1:100 (40x lens). Perform microwave antigen retrieval with 10 mM PBS buffer pH 7.2 before commencing with IHC staining protocol.

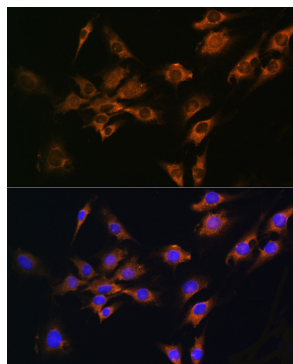


Immunohistochemistry analysis of paraffin-embedded Rat ovary using FGF2 Rabbit pAb (A0235) at dilution of 1:100 (40x lens). Perform microwave antigen retrieval with 10 mM PBS buffer pH 7.2 before commencing with IHC staining protocol.

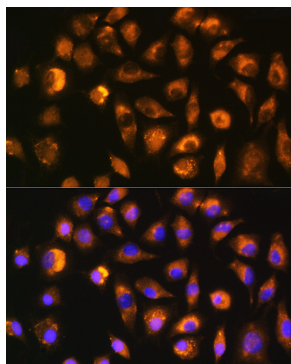


Immunohistochemistry analysis of paraffin-embedded Human colon using FGF2 Rabbit pAb (A0235) at dilution of 1:100 (40x lens). Perform microwave antigen retrieval with 10 mM PBS buffer pH 7.2 before commencing with IHC staining protocol.

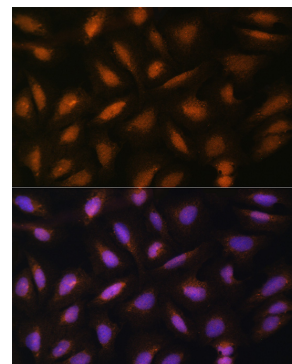
Validation Data



Immunofluorescence analysis of C6 cells using FGF2 Rabbit pAb (A0235) at dilution of 1:100 (40x lens). Blue: DAPI for nuclear staining.



Immunofluorescence analysis of L929 cells using FGF2 Rabbit pAb (A0235) at dilution of 1:100 (40x lens). Blue: DAPI for nuclear staining.



Immunofluorescence analysis of U-2 OS cells using FGF2 Rabbit pAb (A0235) at dilution of 1:100 (40x lens). Blue: DAPI for nuclear staining.