

A0234

Leader in Biomolecular Solutions for Life Science



FasLG Rabbit pAb

Catalog No.: A0234

8 Publications

Basic Information

Observed MW

41kDa

Calculated MW

31kDa

Category

Polyclonal Antibody

Applications

WB, IHC-P, ELISA

Cross-Reactivity

Human, Mouse

Background

This gene is a member of the tumor necrosis factor superfamily. The primary function of the encoded transmembrane protein is the induction of apoptosis triggered by binding to FAS. The FAS/FASLG signaling pathway is essential for immune system regulation, including activation-induced cell death (AICD) of T cells and cytotoxic T lymphocyte induced cell death. It has also been implicated in the progression of several cancers. Defects in this gene may be related to some cases of systemic lupus erythematosus (SLE). Alternatively spliced transcript variants have been described.

Recommended Dilutions

WB	1:500 - 1:2000
IHC-P	1:50 - 1:200

Immunogen Information

Gene ID

356

Swiss Prot

P48023

Immunogen

A synthetic peptide corresponding to a sequence within amino acids 101-200 of human FasLG (NP_000630.1).

Synonyms

APTL; FASL; CD178; CD95L; ALPS1B; CD95-L; TNFSF6; TNLG1A; APT1LG1; FasLG

Contact



www.abclonal.com

Product Information

Source

Rabbit

Isotype

IgG

Purification

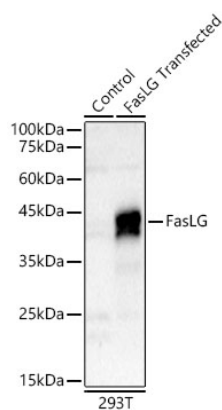
Affinity purification

Storage

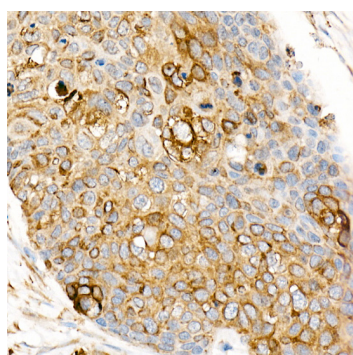
Store at -20°C. Avoid freeze / thaw cycles.

Buffer: PBS with 0.02% sodium azide, 50% glycerol, pH 7.3.

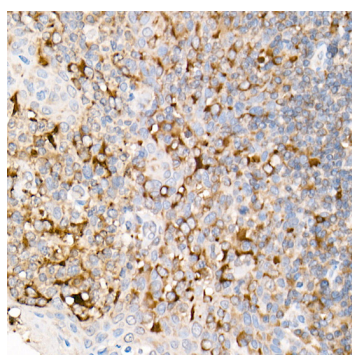
Validation Data



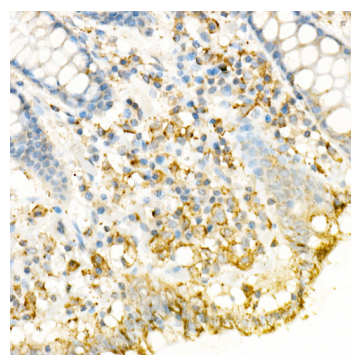
Western blot analysis of lysates from wild type (WT) and 293T cells transfected with FasLG using FasLG Rabbit pAb(A0234) at 1:600 dilution.
 Secondary antibody: HRP Goat Anti-Rabbit IgG (H+L) (AS014) at 1:10000 dilution.
 Lysates/proteins: 25 µg per lane.
 Blocking buffer: 3% nonfat dry milk in TBST.
 Detection: ECL Basic Kit (RM00020).
 Exposure time: 180s.



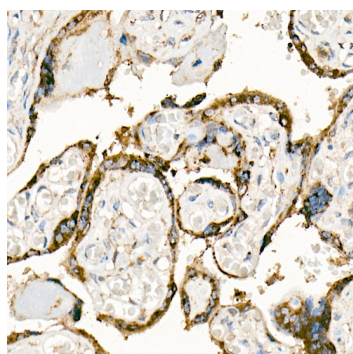
Immunohistochemistry analysis of FasLG in paraffin-embedded Human esophageal cancer using FasLG Rabbit pAb (A0234) at dilution of 1:100 (40x lens). Perform high pressure antigen retrieval with 10 mM citrate buffer pH 6.0 before commencing with IHC staining protocol.



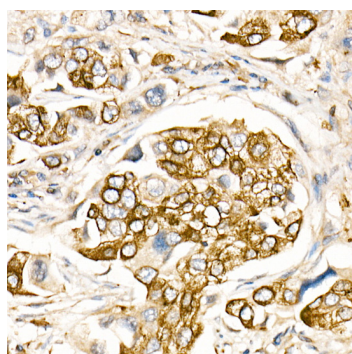
Immunohistochemistry analysis of FasLG in paraffin-embedded Human tonsil using FasLG Rabbit pAb (A0234) at dilution of 1:100 (40x lens). Perform high pressure antigen retrieval with 10 mM citrate buffer pH 6.0 before commencing with IHC staining protocol.



Immunohistochemistry analysis of FasLG in paraffin-embedded Human colon using FasLG Rabbit pAb (A0234) at dilution of 1:100 (40x lens). Perform high pressure antigen retrieval with 10 mM citrate buffer pH 6.0 before commencing with IHC staining protocol.



Immunohistochemistry analysis of FasLG in paraffin-embedded Human placenta using FasLG Rabbit pAb (A0234) at dilution of 1:100 (40x lens). Perform high pressure antigen retrieval with 10 mM citrate buffer pH 6.0 before commencing with IHC staining protocol.



Immunohistochemistry analysis of FasLG in paraffin-embedded Human lung cancer using FasLG Rabbit pAb (A0234) at dilution of 1:100 (40x lens). Perform high pressure antigen retrieval with 10 mM citrate buffer pH 6.0 before commencing with IHC staining protocol.