

A0186

Leader in Biomolecular Solutions for Life Science



## CaMK2 delta/CAMK2 gamma Rabbit mAb

Catalog No.: A0186

Recombinant

### Basic Information

#### Observed MW

50kDa/60kDa

#### Calculated MW

73kDa

#### Category

SMab Recombinant Monoclonal Antibody

#### Applications

WB,IP,ELISA

#### Cross-Reactivity

Human,Mouse,Rat

#### CloneNo number

ARC53334

### Background

The product of this gene belongs to the serine/threonine protein kinase family and to the Ca(2+)/calmodulin-dependent protein kinase subfamily. Calcium signaling is crucial for several aspects of plasticity at glutamatergic synapses. In mammalian cells, the enzyme is composed of four different chains: alpha, beta, gamma, and delta. The product of this gene is a beta chain. It is possible that distinct isoforms of this chain have different cellular localizations and interact differently with calmodulin. Alternative splicing results in multiple transcript variants.

### Recommended Dilutions

WB 1:500 - 1:1000

IP 0.5µg-4µg antibody for  
200µg-400µg extracts of  
whole cells

### Immunogen Information

#### Gene ID

817/818

#### Swiss Prot

Q13554

#### Immunogen

A synthetic peptide corresponding to a sequence within amino acids 200-300 of human CaMK2 delta/CAMK2 gamma (Q13554).

#### Synonyms

CAM2; CAMK2; CAMKB; MRD54; CaMKIIbeta; CaMK2 delta/CAMK2 gamma

### Contact



[www.abclonal.com](http://www.abclonal.com)

### Product Information

#### Source

Rabbit

#### Isotype

IgG

#### Purification

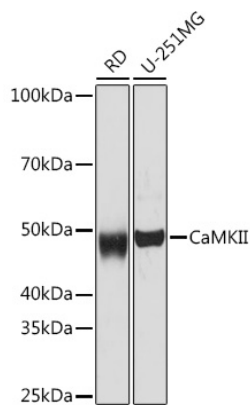
Affinity purification

#### Storage

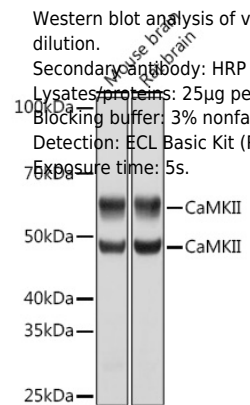
Store at -20°C. Avoid freeze / thaw cycles.

Buffer: PBS with 0.02% sodium azide,0.05% BSA,50% glycerol,pH7.3.

Validation Data



Western blot analysis of various lysates using CaMK2 delta/CAMK2 gamma Rabbit mAb (A0186) at 1:1000 dilution.  
Secondary antibody: HRP Goat Anti-Rabbit IgG (H+L) (AS014) at 1:10000 dilution.  
Lysates/proteins: 25µg per lane.  
Blocking buffer: 3% nonfat dry milk in TBST.  
Detection: ECL Basic Kit (RM00020).  
Exposure time: 3min.



Western blot analysis of various lysates using CaMK2 delta/CAMK2 gamma Rabbit mAb (A0186) at 1:1000 dilution.  
Secondary antibody: HRP Goat Anti-Rabbit IgG (H+L) (AS014) at 1:10000 dilution.  
Lysates/proteins: 25µg per lane.  
Blocking buffer: 3% nonfat dry milk in TBST.  
Detection: ECL Basic Kit (RM00020).  
Exposure time: 5s.