

A0166

Leader in Biomolecular Solutions for Life Science



## VASP Rabbit pAb

Catalog No.: A0166

1 Publications

### Basic Information

#### Observed MW

50kDa

#### Calculated MW

40kDa

#### Category

Mouse Monoclonal Antibody

#### Applications

WB, ELISA

#### Cross-Reactivity

Human

### Background

Vasodilator-stimulated phosphoprotein (VASP) is a member of the Ena-VASP protein family. Ena-VASP family members contain an EHV1 N-terminal domain that binds proteins containing E/DFPPPPXD/E motifs and targets Ena-VASP proteins to focal adhesions. In the mid-region of the protein, family members have a proline-rich domain that binds SH3 and WW domain-containing proteins. Their C-terminal EVH2 domain mediates tetramerization and binds both G and F actin. VASP is associated with filamentous actin formation and likely plays a widespread role in cell adhesion and motility. VASP may also be involved in the intracellular signaling pathways that regulate integrin-extracellular matrix interactions. VASP is regulated by the cyclic nucleotide-dependent kinases PKA and PKG.

### Recommended Dilutions

WB 1:500 - 1:1000

### Immunogen Information

#### Gene ID

7408

#### Swiss Prot

P50552

#### Immunogen

A synthetic peptide corresponding to a sequence within amino acids 150-250 of human VASP (NP\_003361.1).

#### Synonyms

VASP

### Contact



[www.abclonal.com](http://www.abclonal.com)

### Product Information

#### Source

Rabbit

#### Isotype

IgG

#### Purification

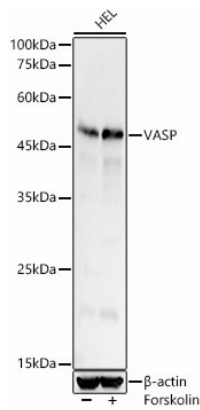
Affinity purification

#### Storage

Store at -20°C. Avoid freeze / thaw cycles.

Buffer: PBS with 0.01% thimerosal, 50% glycerol, pH 7.3.

## Validation Data



Western blot analysis of HEL, using VASP antibody (A0166) at 1:600 dilution. HEL cells were treated by Forskolin (10  $\mu$ M) at 37°C for 1 hour after serum-starvation overnight.  
Secondary antibody: HRP Goat Anti-Rabbit IgG (H+L) (AS014) at 1:10000 dilution.  
Lysates/proteins: 25 $\mu$ g per lane.  
Blocking buffer: 3% nonfat dry milk in TBST.  
Detection: ECL Basic Kit (RM00020).  
Exposure time: 10s.