

A0106

Leader in Biomolecular Solutions for Life Science



## CDK6 Rabbit mAb

Catalog No.: A0106

Recombinant

4 Publications

### Basic Information

#### Observed MW

37kDa

#### Calculated MW

37kDa

#### Category

SMab Recombinant Monoclonal Antibody

#### Applications

WB, ELISA

#### Cross-Reactivity

Human, Rat

#### CloneNo number

ARC0224

### Background

The protein encoded by this gene is a member of the CMGC family of serine/threonine protein kinases. This kinase is a catalytic subunit of the protein kinase complex that is important for cell cycle G1 phase progression and G1/S transition. The activity of this kinase first appears in mid-G1 phase, which is controlled by the regulatory subunits including D-type cyclins and members of INK4 family of CDK inhibitors. This kinase, as well as CDK4, has been shown to phosphorylate, and thus regulate the activity of, tumor suppressor protein Rb. Altered expression of this gene has been observed in multiple human cancers. A mutation in this gene resulting in reduced cell proliferation, and impaired cell motility and polarity, and has been identified in patients with primary microcephaly.

### Recommended Dilutions

WB 1:500 - 1:1000

### Immunogen Information

#### Gene ID

1021

#### Swiss Prot

Q00534

#### Immunogen

A synthetic peptide corresponding to a sequence within amino acids 227-326 of human CDK6 (Q00534).

#### Synonyms

MCPH12; PLSTIRE; CDK6

### Contact



[www.abclonal.com](http://www.abclonal.com)

### Product Information

#### Source

Rabbit

#### Isotype

IgG

#### Purification

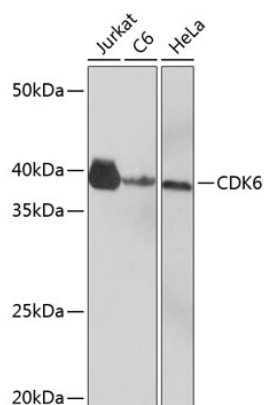
Affinity purification

#### Storage

Store at -20°C. Avoid freeze / thaw cycles.

Buffer: PBS with 0.02% sodium azide, 0.05% BSA, 50% glycerol, pH 7.3.

## Validation Data



Western blot analysis of extracts of various cell lines, using CDK6 Rabbit mAb (A0106) at 1:1000 dilution.  
Secondary antibody: HRP Goat Anti-Rabbit IgG (H+L) (A5014) at 1:10000 dilution.  
Lysates/proteins: 25µg per lane.  
Blocking buffer: 3% nonfat dry milk in TBST.  
Detection: ECL Basic Kit (RM00020).  
Exposure time: 3min.