

A0066

Leader in Biomolecular Solutions for Life Science



## KAT2B/PCAF Rabbit pAb

Catalog No.: A0066

1 Publications

### Basic Information

#### Observed MW

93kDa

#### Calculated MW

93kDa

#### Category

Mouse Monoclonal Antibody

#### Applications

WB,IF/ICC,ELISA

#### Cross-Reactivity

Human,Mouse,Rat

### Background

CBP and p300 are large nuclear proteins that bind to many sequence-specific factors involved in cell growth and/or differentiation, including c-jun and the adenoviral oncoprotein E1A. The protein encoded by this gene associates with p300/CBP. It has in vitro and in vivo binding activity with CBP and p300, and competes with E1A for binding sites in p300/CBP. It has histone acetyl transferase activity with core histones and nucleosome core particles, indicating that this protein plays a direct role in transcriptional regulation.

### Recommended Dilutions

WB	1:500 - 1:1000
IF/ICC	1:50 - 1:200

### Immunogen Information

#### Gene ID

8850

#### Swiss Prot

Q92831

#### Immunogen

Recombinant fusion protein containing a sequence corresponding to amino acids 1-86 of human KAT2B/PCAF (NP\_003875.3).

#### Synonyms

CAF; PCAF; P/CAF; KAT2B/PCAF

### Contact



[www.abclonal.com](http://www.abclonal.com)

### Product Information

#### Source

Rabbit

#### Isotype

IgG

#### Purification

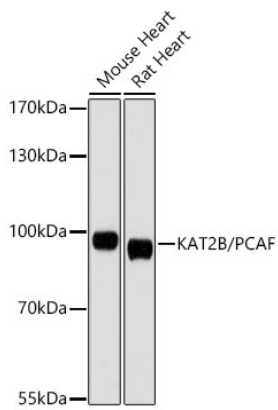
Affinity purification

#### Storage

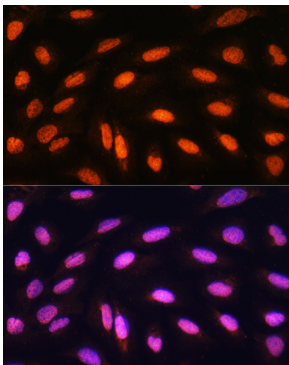
Store at -20°C. Avoid freeze / thaw cycles.

Buffer: PBS with 0.01% thimerosal, 50% glycerol, pH7.3.

## Validation Data



Western blot analysis of various lysates, using KAT2B/PCAF Rabbit pAb (A0066) at 1:1000 dilution.  
Secondary antibody: HRP Goat Anti-Rabbit IgG (H+L) (A5014) at 1:10000 dilution.  
Lysates/proteins: 25µg per lane.  
Blocking buffer: 3% nonfat dry milk in TBST.  
Detection: ECL Basic Kit (RM00020).  
Exposure time: 90s.



Immunofluorescence analysis of U2OS cells using KAT2B/PCAF Rabbit pAb (A0066) at dilution of 1:100. Blue: DAPI for nuclear staining.