

A0005

Leader in Biomolecular Solutions for Life Science



# Insulin Receptor Rabbit pAb

Catalog No.: A0005

1 Publications

## Basic Information

### Observed MW

180kDa

### Calculated MW

156kDa

### Category

Polyclonal Antibody

### Applications

WB, IHC-P, ELISA

### Cross-Reactivity

Mouse, Rat

## Background

This gene encodes a member of the receptor tyrosine kinase family of proteins. The encoded preproprotein is proteolytically processed to generate alpha and beta subunits that form a heterotetrameric receptor. Binding of insulin or other ligands to this receptor activates the insulin signaling pathway, which regulates glucose uptake and release, as well as the synthesis and storage of carbohydrates, lipids and protein. Mutations in this gene underlie the inherited severe insulin resistance syndromes including type A insulin resistance syndrome, Donohue syndrome and Rabson-Mendenhall syndrome. Alternative splicing results in multiple transcript variants.

## Recommended Dilutions

WB	1:500 - 1:2000
IHC-P	1:50 - 1:200

## Immunogen Information

### Gene ID

3643

### Swiss Prot

P06213

### Immunogen

A synthetic peptide corresponding to a sequence within amino acids 1130-1230 of human Insulin Receptor (NP\_000199.2).

### Synonyms

HHF5; CD220; Insulin Receptor

## Contact



[www.abclonal.com](http://www.abclonal.com)

## Product Information

### Source

Rabbit

### Isotype

IgG

### Purification

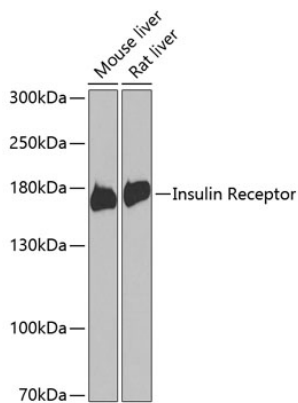
Affinity purification

### Storage

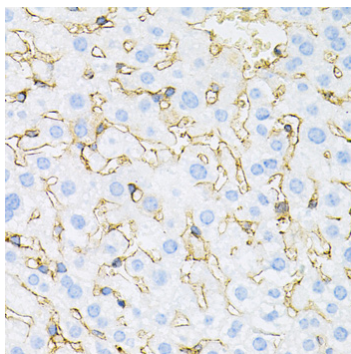
Store at -20°C. Avoid freeze / thaw cycles.

Buffer: PBS with 0.02% sodium azide, 50% glycerol, pH 7.3.

## Validation Data



Western blot analysis of various lysates using Insulin Receptor Rabbit pAb (A0005) at 1:1000 dilution. Secondary antibody: HRP Goat Anti-Rabbit IgG (H+L) (A5014) at 1:10000 dilution. Lysates/proteins: 25µg per lane. Blocking buffer: 3% nonfat dry milk in TBST. Detection: ECL Enhanced Kit (RM00021). Exposure time: 90s.



Immunohistochemistry analysis of Insulin Receptor in paraffin-embedded mouse liver using Insulin Receptor Rabbit pAb (A0005) at dilution of 1:100 (40x lens). Perform microwave antigen retrieval with 10 mM PBS buffer pH 7.2 before commencing with IHC staining protocol.