

[One Step]SRSF3 Antibody Kit

Catalog No.: RK05710

Basic Information

Catalog No.

RK05710

Applications

WB

Cross-Reactivity

Human, Mouse, Rat

Observed MW

22kDa

Calculated MW

14kDa/19kDa

Category

Antibody kit

Product Information

Source

Rabbit

Purification

Affinity purification

Storage

Store at -20°C. Avoid freeze / thaw cycles.

Buffer: PBS with 0.02% sodium azide, 50% glycerol, pH7.3.

Avoid repeated freeze-thaw cycles.

Contact



www.abclonal.com

Background

The protein encoded by this gene is a member of the serine/arginine (SR)-rich family of pre-mRNA splicing factors, which constitute part of the spliceosome. Each of these factors contains an RNA recognition motif (RRM) for binding RNA and an RS domain for binding other proteins. The RS domain is rich in serine and arginine residues and facilitates interaction between different SR splicing factors. In addition to being critical for mRNA splicing, the SR proteins have also been shown to be involved in mRNA export from the nucleus and in translation. Two transcript variants, one protein-coding and the other non-coding, have been found for this gene.

Component & Recommended Dilutions

Catalog No.	Product Name	Dilutions
RK05710-1	SRSF3 Rabbit pAb	1:2000 dilution
RK05710-2	HRP Goat Anti-Rabbit IgG (H+L)	1:10000 dilution

Immunogen Information

Gene ID

6428

Swiss Prot

P84103

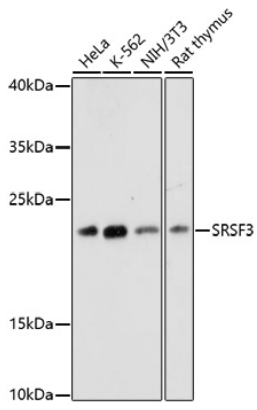
Immunogen

Recombinant fusion protein containing a sequence corresponding to amino acids 1-90 of human SRSF3 (NP_003008.1).

Synonyms

SRSF3;SFRS3;SRp20

Validation Data



Western blot analysis of extracts of various cells, using SRSF3 antibody (A6067) at 1:2000 dilution ratio through one-step method.