

# CPT1B Rabbit pAb

Catalog No.: A6796 **5 Publications**

## Basic Information

**Catalog No.**

A6796

**Observed MW**

110kDa

**Calculated MW**

66kDa/78kDa/83kDa/87kDa

**Category**

Primary antibody

**Applications**

WB,IHC,IF

**Cross-Reactivity**

Human, Mouse, Rat

## Recommended Dilutions

<b>WB</b>	1:500 - 1:2000
<b>IHC</b>	1:50 - 1:200
<b>IF</b>	1:50 - 1:200

## Contact

 | [www.abclonal.com](http://www.abclonal.com)

## Background

The protein encoded by this gene, a member of the carnitine/choline acetyltransferase family, is the rate-controlling enzyme of the long-chain fatty acid beta-oxidation pathway in muscle mitochondria. This enzyme is required for the net transport of long-chain fatty acyl-CoAs from the cytoplasm into the mitochondria. Multiple transcript variants encoding different isoforms have been found for this gene, and read-through transcripts are expressed from the upstream locus that include exons from this gene.

## Immunogen Information

<b>Gene ID</b>	<b>Swiss Prot</b>
1375	Q92523

**Immunogen**

Recombinant fusion protein containing a sequence corresponding to amino acids 533-772 of human CPT1B (NP\_004368.1).

**Synonyms**

CPT1B;CPT1-M;CPT1M;CPTI;CPTI-M;M-CPT1;MCCPT1;MCPT1

## Product Information

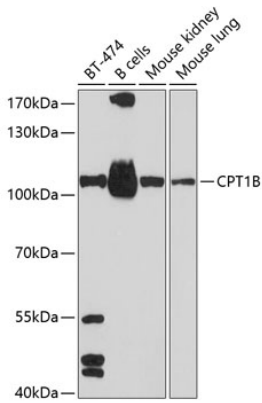
<b>Source</b>	<b>Isotype</b>	<b>Purification</b>
Rabbit	IgG	Affinity purification

**Storage**

Store at -20°C. Avoid freeze / thaw cycles.

Buffer: PBS with 0.02% sodium azide,50% glycerol,pH7.3.

## Validation Data



Western blot analysis of extracts of various cell lines, using CPT1B antibody (A6796) at 1:1000 dilution.

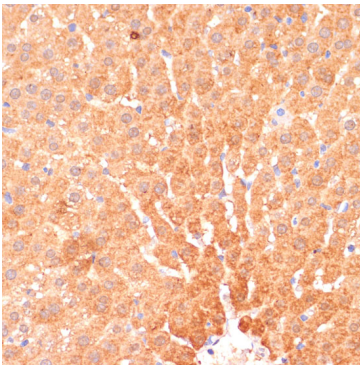
Secondary antibody: HRP Goat Anti-Rabbit IgG (H+L) (AS014) at 1:10000 dilution.

Lysates/proteins: 25ug per lane.

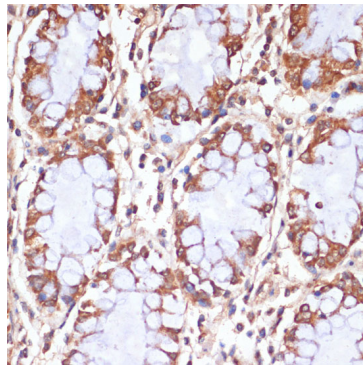
Blocking buffer: 3% nonfat dry milk in TBST.

Detection: ECL Basic Kit (RM00020).

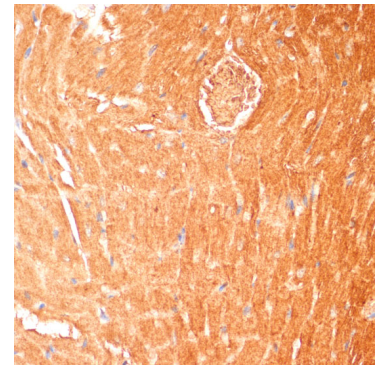
Exposure time: 60s.



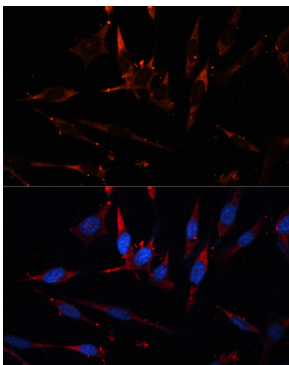
Immunohistochemistry of paraffin-embedded rat liver using CPT1B antibody (A6796) at dilution of 1:100 (40x lens).



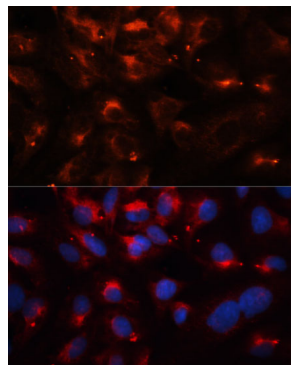
Immunohistochemistry of paraffin-embedded human colon using CPT1B antibody (A6796) at dilution of 1:100 (40x lens).



Immunohistochemistry of paraffin-embedded mouse heart using CPT1B antibody (A6796) at dilution of 1:100 (40x lens).



Immunofluorescence analysis of NIH/3T3 cells using CPT1B antibody (A6796) at dilution of 1:100. Blue: DAPI for nuclear staining.



Immunofluorescence analysis of U2OS cells using CPT1B antibody (A6796) at dilution of 1:100. Blue: DAPI for nuclear staining.