

# CSF3 Rabbit pAb

Catalog No.: A6178

## Basic Information

### Catalog No.

A6178

### Observed MW

22kDa

### Calculated MW

18kDa/21kDa/22kDa

### Category

Primary antibody

### Applications

WB, IHC

### Cross-Reactivity

Human, Mouse, Rat

## Recommended Dilutions

<b>WB</b>	1:500 - 1:1000
<b>IHC</b>	1:50 - 1:200

## Contact

 | [www.abclonal.com](http://www.abclonal.com)

## Background

The protein encoded by this gene is a cytokine that controls the production, differentiation, and function of granulocytes. The active protein is found extracellularly. Alternatively spliced transcript variants have been described for this gene.

## Immunogen Information

<b>Gene ID</b>	<b>Swiss Prot</b>
1440	P09919

### Immunogen

Recombinant fusion protein containing a sequence corresponding to amino acids 30-207 of human CSF3 (NP\_000750.1).

### Synonyms

CSF3;C17orf33;CSF3OS;GCSF

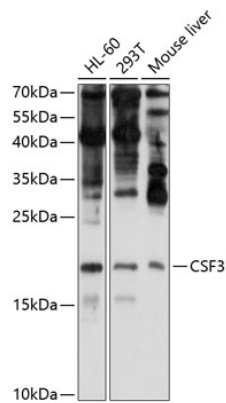
## Product Information

<b>Source</b>	<b>Isotype</b>	<b>Purification</b>
Rabbit	IgG	Affinity purification

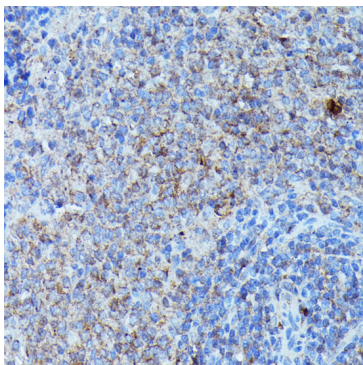
### Storage

Store at -20°C. Avoid freeze / thaw cycles.  
Buffer: PBS with 0.02% sodium azide,50% glycerol,pH7.3.

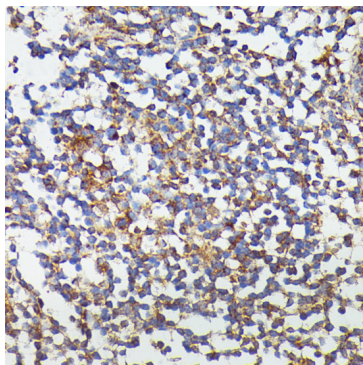
## Validation Data



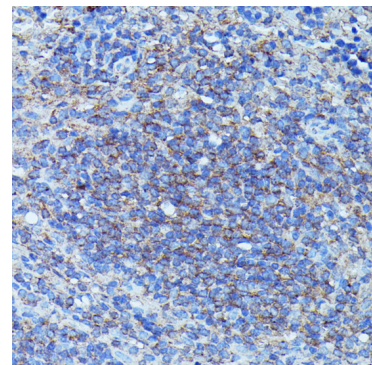
Western blot analysis of extracts of various cell lines, using CSF3 antibody (A6178) at 1:1000 dilution. Secondary antibody: HRP Goat Anti-Rabbit IgG (H+L) (AS014) at 1:10000 dilution. Lysates/proteins: 25ug per lane. Blocking buffer: 3% nonfat dry milk in TBST. Detection: ECL Enhanced Kit (RM00021). Exposure time: 90s.



Immunohistochemistry of paraffin-embedded rat spleen using CSF3 antibody (A6178) at dilution of 1:100 (40x lens).



Immunohistochemistry of paraffin-embedded human colon using CSF3 antibody (A6178) at dilution of 1:100 (40x lens).



Immunohistochemistry of paraffin-embedded mouse spleen using CSF3 antibody (A6178) at dilution of 1:100 (40x lens).