

[KO Validated] APEX1/APE1 Rabbit pAb

Catalog No.: A2587 **KO** Validated

Basic Information

Catalog No.

A2587

Observed MW

39kDa

Calculated MW

35kDa

Category

Primary antibody

Applications

WB, IF, IP

Cross-Reactivity

Human

Recommended Dilutions

| | |
|-----------|----------------|
| WB | 1:500 - 1:2000 |
| IF | 1:50 - 1:100 |
| IP | 1:50 - 1:200 |

Contact

 | www.abclonal.com

Background

Apurinic/aprimidinic (AP) sites occur frequently in DNA molecules by spontaneous hydrolysis, by DNA damaging agents or by DNA glycosylases that remove specific abnormal bases. AP sites are pre-mutagenic lesions that can prevent normal DNA replication so the cell contains systems to identify and repair such sites. Class II AP endonucleases cleave the phosphodiester backbone 5' to the AP site. This gene encodes the major AP endonuclease in human cells. Splice variants have been found for this gene; all encode the same protein.

Immunogen Information

| | |
|----------------|-------------------|
| Gene ID | Swiss Prot |
| 328 | P27695 |

Immunogen

Recombinant fusion protein containing a sequence corresponding to amino acids 1-318 of human APEX1/APE1/APE1 (NP_542380.1).

Synonyms

APEX1;APE;APE1;APEN;APEX;APX;HAP1;REF1

Product Information

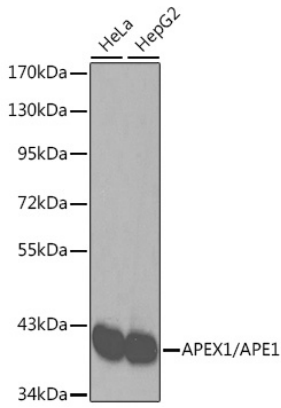
| | | |
|---------------|----------------|-----------------------|
| Source | Isotype | Purification |
| Rabbit | IgG | Affinity purification |

Storage

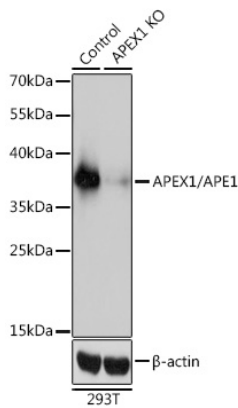
Store at -20°C. Avoid freeze / thaw cycles.

Buffer: PBS with 0.02% sodium azide,50% glycerol,pH7.3.

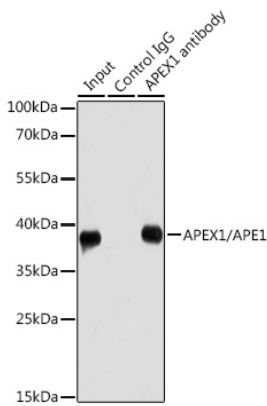
Validation Data



Western blot analysis of extracts of various cell lines, using APEX1/APE1/APE1 antibody (A2587).
Secondary antibody: HRP Goat Anti-Rabbit IgG (H+L) (AS014) at 1:10000 dilution.
Lysates/proteins: 25ug per lane.
Blocking buffer: 3% nonfat dry milk in TBST.

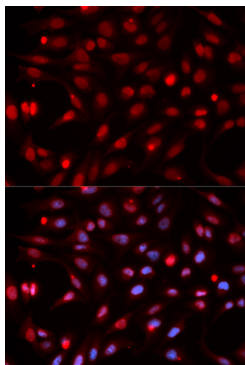


Western blot analysis of extracts from normal (control) and APEX1/APE1/APE1 knockout (KO) 293T cells, using APEX1/APE1/APE1 antibody (A2587) at 1:3000 dilution.
Secondary antibody: HRP Goat Anti-Rabbit IgG (H+L) (AS014) at 1:10000 dilution.
Lysates/proteins: 25ug per lane.
Blocking buffer: 3% nonfat dry milk in TBST.
Detection: ECL Basic Kit (RM00020).
Exposure time: 1s.

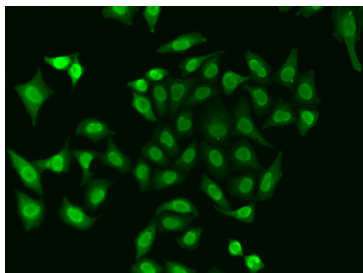


Immunoprecipitation analysis of 200ug extracts of HeLa cells using 1ug APEX1/APE1/APE1 antibody (A2587). Western blot was performed from the immunoprecipitate using APEX1/APE1/APE1 antibody (A2587) at a dilution of 1:1000.

Validation Data



Immunofluorescence analysis of HeLa cells using APEX1/APE1/APE1 antibody (A2587). Blue: DAPI for nuclear staining.



Immunofluorescence analysis of A549 cells using APEX1/APE1/APE1 antibody (A2587).