

# [KO Validated] ABCF2 Rabbit pAb

Catalog No.: A19950 **KO** Validated

## Basic Information

### Catalog No.

A19950

### Observed MW

71kDa

### Calculated MW

71kDa/72kDa

### Category

Primary antibody

### Applications

WB,IHC,IF

### Cross-Reactivity

Human, Mouse, Rat

## Background

This gene encodes a member of the ATP-binding cassette (ABC) transporter superfamily. ATP-binding cassette proteins transport various molecules across extra- and intracellular membranes. Alterations in this gene may be involved in cancer progression. Alternative splicing results in multiple transcript variants. Related pseudogenes have been identified on chromosomes 3 and 7.

## Recommended Dilutions

<b>WB</b>	1:500 - 1:2000
<b>IHC</b>	1:50 - 1:200
<b>IF</b>	1:50 - 1:200

## Immunogen Information

<b>Gene ID</b>	<b>Swiss Prot</b>
10061	Q9UG63

### Immunogen

Recombinant protein of human ABCF2.

### Synonyms

ABCF2;ABC28;EST133090;HUSSY-18;HUSSY18

## Contact

 | [www.abclonal.com](http://www.abclonal.com)

## Product Information

<b>Source</b>	<b>Isotype</b>	<b>Purification</b>
Rabbit	IgG	Affinity purification

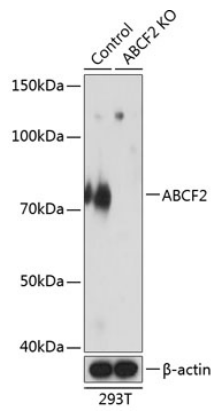
### Storage

Store at -20°C. Avoid freeze / thaw cycles.

Buffer: PBS with 0.02% sodium azide,50% glycerol,pH7.3.

## Validation Data

---



Western blot analysis of extracts from normal (control) and ABCF2 knockout (KO) 293T cells, using ABCF2 antibody (A19950) at 1:1000 dilution.  
Secondary antibody: HRP Goat Anti-Rabbit IgG (H+L) (AS014) at 1:10000 dilution.  
Lysates/proteins: 25ug per lane.  
Blocking buffer: 3% nonfat dry milk in TBST.  
Detection: ECL Basic Kit (RM00020).  
Exposure time: 3s.