

# [KO Validated] AKT2 Rabbit pAb

Catalog No.: A18019 **KO** Validated

## Basic Information

### Catalog No.

A18019

### Observed MW

60kDa

### Calculated MW

51kDa/55kDa

### Category

Primary antibody

### Applications

WB, IHC, ICC, IF, IP, CHIP

### Cross-Reactivity

Human, Mouse, Rat, Monkey

## Recommended Dilutions

<b>WB</b>	1:500 - 1:2000
<b>IHC</b>	1:50 - 1:100
<b>ICC</b>	1:50 - 1:200
<b>IF</b>	1:50 - 1:100
<b>IP</b>	1:20 - 1:50
<b>ChIP</b>	1:20 - 1:100

## Contact

 | [www.abclonal.com](http://www.abclonal.com)

## Background

This gene is a putative oncogene encoding a protein belonging to a subfamily of serine/threonine kinases containing SH2-like (Src homology 2-like) domains. The gene was shown to be amplified and overexpressed in 2 of 8 ovarian carcinoma cell lines and 2 of 15 primary ovarian tumors. Overexpression contributes to the malignant phenotype of a subset of human ductal pancreatic cancers. The encoded protein is a general protein kinase capable of phosphorylating several known proteins.

## Immunogen Information

<b>Gene ID</b>	<b>Swiss Prot</b>
208	P31751

### Immunogen

Recombinant protein of human AKT2

### Synonyms

AKT2;HIHGHH;PKBB;PKBBETA;PRKBB;RAC-BETA

## Product Information

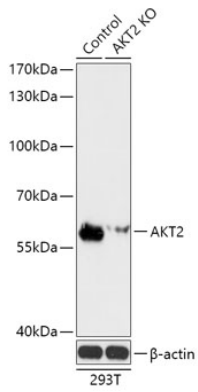
<b>Source</b>	<b>Isotype</b>	<b>Purification</b>
Rabbit	IgG	Affinity purification

### Storage

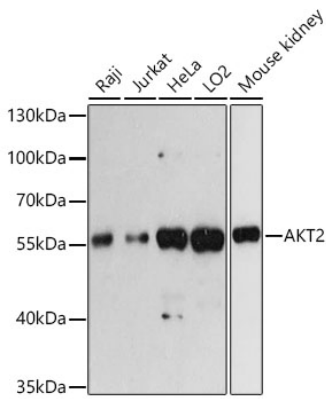
Store at -20°C. Avoid freeze / thaw cycles.

Buffer: PBS with 0.02% sodium azide,50% glycerol,pH7.3.

## Validation Data



Western blot analysis of extracts from normal (control) and AKT2 knockout (KO) 293T cells, using AKT2 antibody (A18019) at 1:3000 dilution.  
Secondary antibody: HRP Goat Anti-Rabbit IgG (H+L) (AS014) at 1:10000 dilution.  
Lysates/proteins: 25ug per lane.  
Blocking buffer: 3% nonfat dry milk in TBST.  
Detection: ECL Basic Kit (RM00020).  
Exposure time: 90s.



Western blot analysis of extracts of various cell lines, using AKT2 antibody (A18019) at 1:3000 dilution.  
Secondary antibody: HRP Goat Anti-Rabbit IgG (H+L) (AS014) at 1:10000 dilution.  
Lysates/proteins: 25ug per lane.  
Blocking buffer: 3% nonfat dry milk in TBST.  
Detection: ECL Basic Kit (RM00020).  
Exposure time: 60s.