

CPB2 Rabbit pAb

Catalog No.: A15266

Basic Information

Catalog No.

A15266

Observed MW

48kDa

Calculated MW

40kDa/48kDa

Category

Primary antibody

Applications

WB

Cross-Reactivity

Rat

Recommended Dilutions

WB 1:200 - 1:2000

Background

Carboxypeptidases are enzymes that hydrolyze C-terminal peptide bonds. The carboxypeptidase family includes metallo-, serine, and cysteine carboxypeptidases. According to their substrate specificity, these enzymes are referred to as carboxypeptidase A (cleaving aliphatic residues) or carboxypeptidase B (cleaving basic amino residues). The protein encoded by this gene is activated by trypsin and acts on carboxypeptidase B substrates. After thrombin activation, the mature protein downregulates fibrinolysis. Polymorphisms have been described for this gene and its promoter region. Alternate splicing results in multiple transcript variants.

Immunogen Information

Gene ID

1361

Swiss Prot

Q96IY4

Immunogen

Recombinant fusion protein containing a sequence corresponding to amino acids 310-410 of human CPB2 (NP_001863.3).

Synonyms

CPB2; CPU; PCPB; TAFI

Contact

 | www.abclonal.com

Product Information

Source

Rabbit

Isotype

IgG

Purification

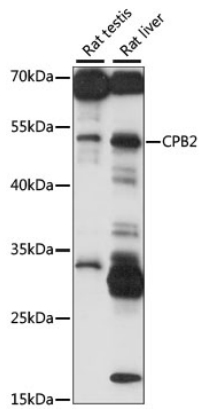
Affinity purification

Storage

Store at -20°C. Avoid freeze / thaw cycles.

Buffer: PBS with 0.02% sodium azide, 50% glycerol, pH7.3.

Validation Data



Western blot analysis of extracts of various cell lines, using CPB2 antibody (A15266) at 1:1000 dilution.

Secondary antibody: HRP Goat Anti-Rabbit IgG (H+L) (AS014) at 1:10000 dilution.

Lysates/proteins: 25ug per lane.

Blocking buffer: 3% nonfat dry milk in TBST.

Detection: ECL Basic Kit (RM00020).

Exposure time: 10S.