

# APOH Rabbit pAb

Catalog No.: A1220

## Basic Information

### Catalog No.

A1220

### Observed MW

45kDa

### Calculated MW

38kDa

### Category

Primary antibody

### Applications

WB, IF

### Cross-Reactivity

Human

## Recommended Dilutions

<b>WB</b>	1:500 - 1:2000
<b>IF</b>	1:50 - 1:200

## Contact

 | [www.abclonal.com](http://www.abclonal.com)

## Background

Apolipoprotein H has been implicated in a variety of physiologic pathways including lipoprotein metabolism, coagulation, and the production of antiphospholipid autoantibodies. APOH may be a required cofactor for anionic phospholipid binding by the antiphospholipid autoantibodies found in sera of many patients with lupus and primary antiphospholipid syndrome, but it does not seem to be required for the reactivity of antiphospholipid autoantibodies associated with infections.

## Immunogen Information

<b>Gene ID</b>	<b>Swiss Prot</b>
350	P02749

### Immunogen

Recombinant fusion protein containing a sequence corresponding to amino acids 21-345 of human APOH (NP\_000033.2).

### Synonyms

APOH;B2G1;B2GP1;BG

## Product Information

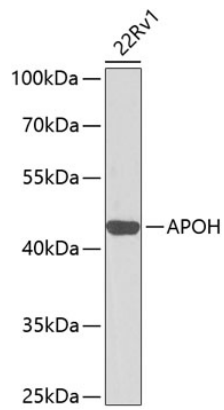
<b>Source</b>	<b>Isotype</b>	<b>Purification</b>
Rabbit	IgG	Affinity purification

### Storage

Store at -20°C. Avoid freeze / thaw cycles.  
Buffer: PBS with 0.02% sodium azide, 50% glycerol, pH7.3.

## Validation Data

---



Western blot analysis of extracts of 22Rv1 cells, using APOH antibody (A1220) at 1:1000 dilution.  
Secondary antibody: HRP Goat Anti-Rabbit IgG (H+L) (AS014) at 1:10000 dilution.  
Lysates/proteins: 25ug per lane.  
Blocking buffer: 3% nonfat dry milk in TBST.  
Detection: ECL Basic Kit (RM00020).  
Exposure time: 30s.