

# Adenosine Deaminase (ADA) Rabbit pAb

Catalog No.: A1019

## Basic Information

### Catalog No.

A1019

### Observed MW

41kDa

### Calculated MW

40kDa

### Category

Primary antibody

### Applications

WB, IF

### Cross-Reactivity

Human, Mouse, Rat

## Recommended Dilutions

<b>WB</b>	1:500 - 1:2000
<b>IF</b>	1:50 - 1:200

## Contact

 | [www.abclonal.com](http://www.abclonal.com)

## Background

This gene encodes an enzyme that catalyzes the hydrolysis of adenosine to inosine. Various mutations have been described for this gene and have been linked to human diseases. Deficiency in this enzyme causes a form of severe combined immunodeficiency disease (SCID), in which there is dysfunction of both B and T lymphocytes with impaired cellular immunity and decreased production of immunoglobulins, whereas elevated levels of this enzyme have been associated with congenital hemolytic anemia.

## Immunogen Information

<b>Gene ID</b>	<b>Swiss Prot</b>
100	P00813

### Immunogen

Recombinant fusion protein containing a sequence corresponding to amino acids 1-363 of human Adenosine Deaminase (Adenosine Deaminase (ADA)) (NP\_000013.2).

### Synonyms

ADA

## Product Information

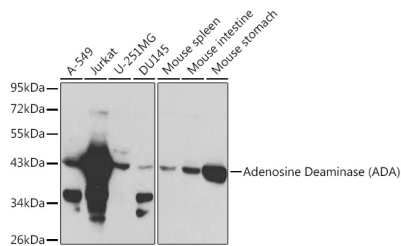
<b>Source</b>	<b>Isotype</b>	<b>Purification</b>
Rabbit	IgG	Affinity purification

### Storage

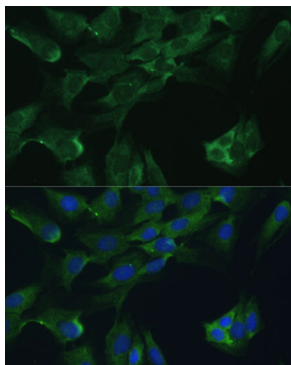
Store at -20°C. Avoid freeze / thaw cycles.  
Buffer: PBS with 0.02% sodium azide, 50% glycerol, pH7.3.

## Validation Data

---



Western blot analysis of extracts of various cell lines, using Adenosine Deaminase (Adenosine Deaminase (ADA)) antibody (A1019) at 1:1000 dilution. Secondary antibody: HRP Goat Anti-Rabbit IgG (H+L) (AS014) at 1:10000 dilution. Lysates/proteins: 25ug per lane. Blocking buffer: 3% nonfat dry milk in TBST.



Immunofluorescence analysis of C6 cells using Adenosine Deaminase (Adenosine Deaminase (ADA)) antibody (A1019) at dilution of 1:100. Blue: DAPI for nuclear staining.