

CNPase Rabbit pAb

Catalog No.: A1018 **3 Publications**

Basic Information

Catalog No.

A1018

Observed MW

48kDa

Calculated MW

45kDa/47kDa

Category

Primary antibody

Applications

WB, IHC, IF

Cross-Reactivity

Human, Mouse, Rat

Recommended Dilutions

WB	1:500 - 1:2000
IHC	1:50 - 1:200
IF	1:50 - 1:200

Contact

 | www.abclonal.com

Background

Immunogen Information

Gene ID

1267

Swiss Prot

P09543

Immunogen

Recombinant fusion protein containing a sequence corresponding to amino acids 152-421 of human CNPasease (NP_149124.3).

Synonyms

CNP;CNP1;CNPase

Product Information

Source

Rabbit

Isotype

IgG

Purification

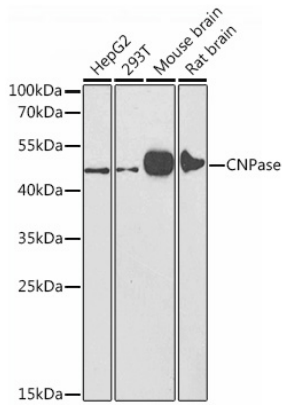
Affinity purification

Storage

Store at -20°C. Avoid freeze / thaw cycles.

Buffer: PBS with 0.02% sodium azide,50% glycerol,pH7.3.

Validation Data



Western blot analysis of extracts of various cell lines, using CNPase antibody (A1018) at 1:1000 dilution.

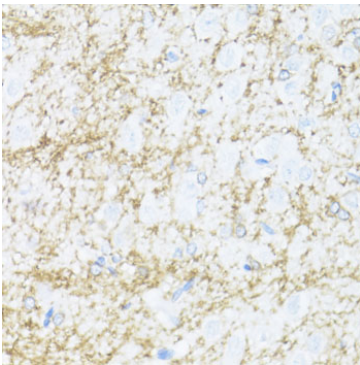
Secondary antibody: HRP Goat Anti-Rabbit IgG (H+L) (AS014) at 1:10000 dilution.

Lysates/proteins: 25ug per lane.

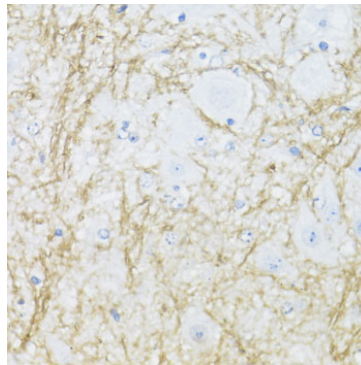
Blocking buffer: 3% nonfat dry milk in TBST.

Detection: ECL Enhanced Kit (RM00021).

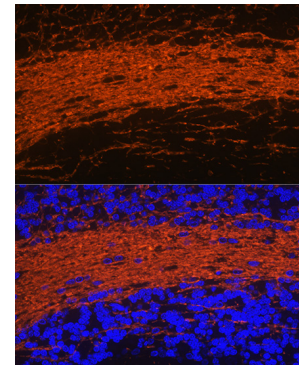
Exposure time: 15s.



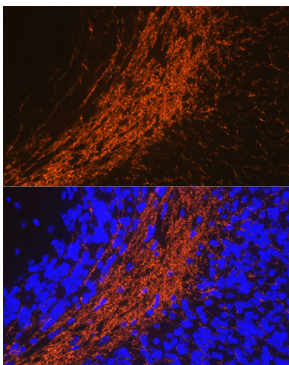
Immunohistochemistry of paraffin-embedded rat brain using CNPase antibody (A1018) at dilution of 1:100 (40x lens).



Immunohistochemistry of paraffin-embedded mouse spinal cord using CNPase antibody (A1018) at dilution of 1:100 (40x lens).



Immunofluorescence analysis of rat brain using CNPase Rabbit pAb (A1018) at dilution of 1:100 (40x lens). Blue: DAPI for nuclear staining.



Immunofluorescence analysis of mouse brain using CNPase Rabbit pAb (A1018) at dilution of 1:100 (40x lens). Blue: DAPI for nuclear staining.