

# BAGE2 Rabbit pAb

Catalog No.: A10159

## Basic Information

---

**Catalog No.**

A10159

**Observed MW**

12kDa

**Calculated MW**

12kDa

**Category**

Primary antibody

**Applications**

WB

**Cross-Reactivity**

Human

## Recommended Dilutions

---

**WB** 1:500 - 1:2000

## Background

---

## Immunogen Information

---

**Gene ID**

85319

**Swiss Prot**

Q86Y30

**Immunogen**

Recombinant fusion protein containing a sequence corresponding to amino acids 18-109 of human BAGE2 (NP\_872288.2).

**Synonyms**

BAGE2;CT2.2

## Contact

---

 | [www.abclonal.com](http://www.abclonal.com)

## Product Information

---

**Source**

Rabbit

**Isotype**

IgG

**Purification**

Affinity purification

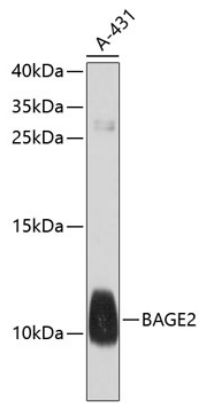
**Storage**

Store at -20°C. Avoid freeze / thaw cycles.

Buffer: PBS with 0.02% sodium azide, 50% glycerol, pH7.3.

## Validation Data

---



Western blot analysis of extracts of A-431 cells, using BAGE2 antibody (A10159) at 1:1000 dilution.  
Secondary antibody: HRP Goat Anti-Rabbit IgG (H+L) (AS014) at 1:10000 dilution.  
Lysates/proteins: 25ug per lane.  
Blocking buffer: 3% nonfat dry milk in TBST.  
Detection: ECL Basic Kit (RM00020).  
Exposure time: 90s.