

Alpha-1 Antitrypsin (SERPINA1) Rabbit pAb

Catalog No.: A1015 **1 Publications**

Basic Information

Catalog No.

A1015

Observed MW

45kDa, 50kDa

Calculated MW

34kDa/40kDa/46kDa

Category

Primary antibody

Applications

WB, IHC, IF

Cross-Reactivity

Human, Mouse, Rat

Recommended Dilutions

WB	1:500 - 1:2000
IHC	1:50 - 1:200
IF	1:50 - 1:200

Contact

 | www.abclonal.com

Background

The protein encoded by this gene is secreted and is a serine protease inhibitor whose targets include elastase, plasmin, thrombin, trypsin, chymotrypsin, and plasminogen activator. Defects in this gene can cause emphysema or liver disease. Several transcript variants encoding the same protein have been found for this gene.

Immunogen Information

Gene ID	Swiss Prot
5265	P01009

Immunogen

Recombinant fusion protein containing a sequence corresponding to amino acids 25-315 of human Alpha-1 Antitrypsin (Alpha-1 Antitrypsin (SERPINA1)) (NP_000286.3).

Synonyms

SERPINA1;A1A;A1AT;AAT;PI;PI1;PRO2275;alpha1AT

Product Information

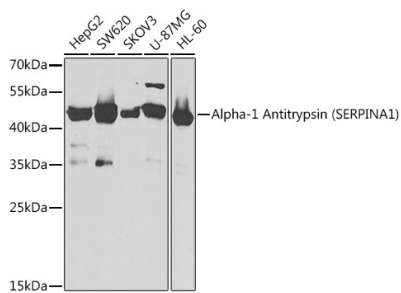
Source	Isotype	Purification
Rabbit	IgG	Affinity purification

Storage

Store at -20°C. Avoid freeze / thaw cycles.

Buffer: PBS with 0.02% sodium azide,50% glycerol,pH7.3.

Validation Data



Western blot analysis of extracts of various cell lines, using Alpha-1 Antitrypsin (Alpha-1 Antitrypsin (SERPINA1)) antibody (A1015) at 1:1000 dilution.

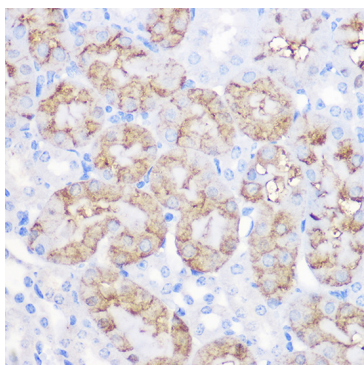
Secondary antibody: HRP Goat Anti-Rabbit IgG (H+L) (AS014) at 1:10000 dilution.

Lysates/proteins: 25ug per lane.

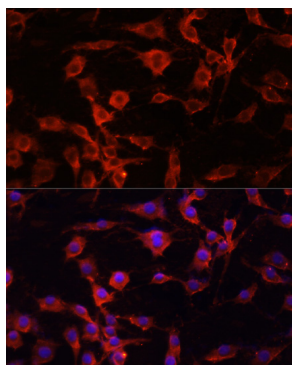
Blocking buffer: 3% nonfat dry milk in TBST.

Detection: ECL Basic Kit (RM00020).

Exposure time: 30s.



Immunohistochemistry of paraffin-embedded mouse kidney using Alpha-1 Antitrypsin (Alpha-1 Antitrypsin (SERPINA1)) Rabbit pAb (A1015) at dilution of 1:100 (40x lens).



Immunofluorescence analysis of PC-12 cells using Alpha-1 Antitrypsin (Alpha-1 Antitrypsin (SERPINA1)) antibody (A1015) at dilution of 1:100 (40x lens). Blue: DAPI for nuclear staining.