

[KO Validated] BRG1/SMARCA4 Rabbit pAb

Catalog No.: A0887 **KO Validated**

Basic Information

Catalog No.

A0887

Observed MW

180kDa

Calculated MW

181kDa/184kDa

Category

Primary antibody

Applications

WB, IHC, IF

Cross-Reactivity

Human

Recommended Dilutions

WB	1:500 - 1:2000
IHC	1:50 - 1:100
IF	1:20 - 1:50

Contact

 | www.abclonal.com

Background

The protein encoded by this gene is a member of the SWI/SNF family of proteins and is similar to the brahma protein of *Drosophila*. Members of this family have helicase and ATPase activities and are thought to regulate transcription of certain genes by altering the chromatin structure around those genes. The encoded protein is part of the large ATP-dependent chromatin remodeling complex SNF/SWI, which is required for transcriptional activation of genes normally repressed by chromatin. In addition, this protein can bind BRCA1, as well as regulate the expression of the tumorigenic protein CD44. Mutations in this gene cause rhabdoid tumor predisposition syndrome type 2. Multiple transcript variants encoding different isoforms have been found for this gene.

Immunogen Information

Gene ID	Swiss Prot
6597	P51532

Immunogen

A synthetic peptide corresponding to a sequence within amino acids 30-130 of human BRG1/BRG1/SMARCA4 (NP_003063.2).

Synonyms

BAF190;BAF190A;BRG1;CSS4;MRD16;RTPS2;SNF2;SNF2L4;SNF2LB;SWI2;hSNF2b;SMARCA4

Product Information

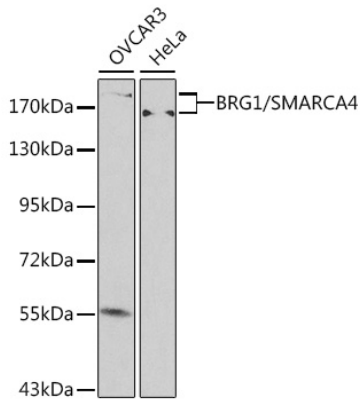
Source	Isotype	Purification
Rabbit	IgG	Affinity purification

Storage

Store at -20°C. Avoid freeze / thaw cycles.

Buffer: PBS with 0.02% sodium azide, 50% glycerol, pH7.3.

Validation Data

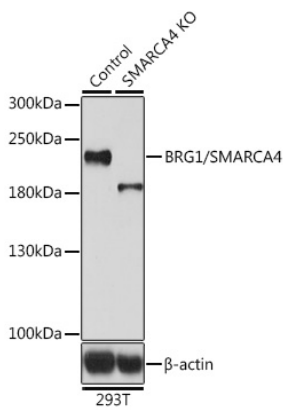


Western blot analysis of extracts of various cell lines, using BRG1/BRG1/SMARCA4 antibody (A0887) at 1:500 dilution.

Secondary antibody: HRP Goat Anti-Rabbit IgG (H+L) (AS014) at 1:10000 dilution.

Lysates/proteins: 25ug per lane.

Blocking buffer: 3% nonfat dry milk in TBST.



Western blot analysis of extracts from normal (control) and BRG1/BRG1/SMARCA4 knockout (KO) 293T cells, using BRG1/BRG1/SMARCA4 antibody (A0887) at 1:500 dilution.

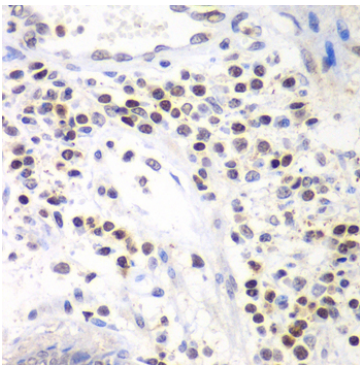
Secondary antibody: HRP Goat Anti-Rabbit IgG (H+L) (AS014) at 1:10000 dilution.

Lysates/proteins: 25ug per lane.

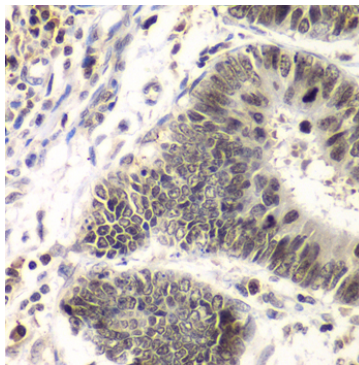
Blocking buffer: 3% nonfat dry milk in TBST.

Detection: ECL Basic Kit (RM00020).

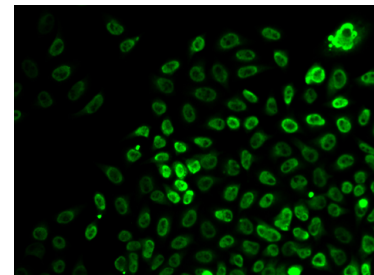
Exposure time: 90s.



Immunohistochemistry of paraffin-embedded human colon using BRG1/BRG1/SMARCA4 antibody (A0887) at dilution of 1:100 (40x lens).



Immunohistochemistry of paraffin-embedded human colon carcinoma using BRG1/BRG1/SMARCA4 antibody (A0887) at dilution of 1:100 (40x lens).



Immunofluorescence analysis of HeLa cells using BRG1/BRG1/SMARCA4 antibody (A0887).