

[KO Validated] NBS1/NBN Rabbit pAb

Catalog No.: A0783 **KO Validated** **3 Publications**

Basic Information

Catalog No.

A0783

Observed MW

95kDa/70kDa

Calculated MW

84kDa

Category

Primary antibody

Applications

WB, IHC


Cross-Reactivity

Human, Mouse, Rat

Recommended Dilutions

WB	1:500 - 1:1000
IHC	1:50 - 1:100

Contact

 | www.abclonal.com

Background

Mutations in this gene are associated with Nijmegen breakage syndrome, an autosomal recessive chromosomal instability syndrome characterized by microcephaly, growth retardation, immunodeficiency, and cancer predisposition. The encoded protein is a member of the MRE11/RAD50 double-strand break repair complex which consists of 5 proteins. This gene product is thought to be involved in DNA double-strand break repair and DNA damage-induced checkpoint activation.

Immunogen Information

Gene ID	Swiss Prot
4683	O60934

Immunogen

Recombinant fusion protein containing a sequence corresponding to amino acids 435-754 of human NBS1/NBS1/NBN (NP_002476.2).

Synonyms

NBN;AT-V1;AT-V2;ATV;NBS;NBS1;P95;nibrin

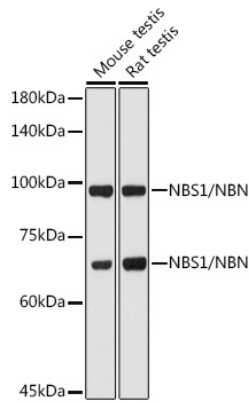
Product Information

Source	Isotype	Purification
Rabbit	IgG	Affinity purification

Storage

Store at -20°C. Avoid freeze / thaw cycles.
Buffer: PBS with 0.02% sodium azide, 50% glycerol, pH7.3.

Validation Data



Western blot analysis of extracts of various cell lines, using NBS1/NBS1/NBN antibody (A0783) at 1:1000 dilution.

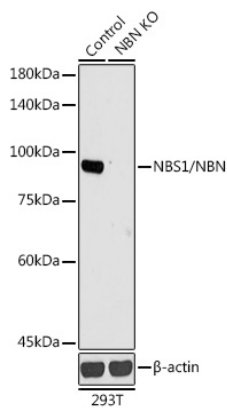
Secondary antibody: HRP Goat Anti-Rabbit IgG (H+L) (AS014) at 1:10000 dilution.

Lysates/proteins: 25ug per lane.

Blocking buffer: 3% nonfat dry milk in TBST.

Detection: ECL Basic Kit (RM00020).

Exposure time: 90s.



Western blot analysis of extracts from normal (control) and NBS1/NBS1/NBN knockout (KO) 293T cells, using NBS1/NBS1/NBN antibody (A0783) at 1:1000 dilution.

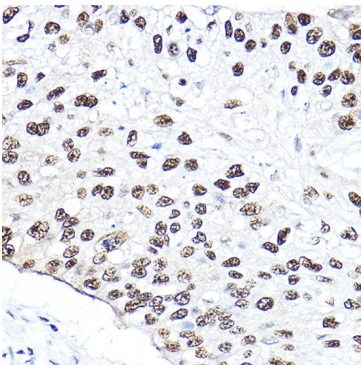
Secondary antibody: HRP Goat Anti-Rabbit IgG (H+L) (AS014) at 1:10000 dilution.

Lysates/proteins: 25ug per lane.

Blocking buffer: 3% nonfat dry milk in TBST.

Detection: ECL Basic Kit (RM00020).

Exposure time: 90s.



Immunohistochemistry of paraffin-embedded human lung cancer using [KO Validated] NBS1/NBS1/NBN Rabbit pAb (A0783) at dilution of 1:50 (40x lens).