

[KO Validated] Cyclin D3 Rabbit pAb

Catalog No.: A0746 **KO Validated** **1 Publications**

Basic Information

Catalog No.

A0746

Observed MW

36kDa

Calculated MW

9kDa/22kDa/24kDa/32kDa

Category

Primary antibody

Applications

WB

Cross-Reactivity

Human, Mouse

Recommended Dilutions

WB 1:500 - 1:2000

Background

The protein encoded by this gene belongs to the highly conserved cyclin family, whose members are characterized by a dramatic periodicity in protein abundance through the cell cycle. Cyclins function as regulators of CDK kinases. Different cyclins exhibit distinct expression and degradation patterns which contribute to the temporal coordination of each mitotic event. This cyclin forms a complex with and functions as a regulatory subunit of CDK4 or CDK6, whose activity is required for cell cycle G1/S transition. This protein has been shown to interact with and be involved in the phosphorylation of tumor suppressor protein Rb. The CDK4 activity associated with this cyclin was reported to be necessary for cell cycle progression through G2 phase into mitosis after UV radiation. Several transcript variants encoding different isoforms have been found for this gene.

Immunogen Information

Gene ID

896

Swiss Prot

P30281

Immunogen

Recombinant fusion protein containing a sequence corresponding to amino acids 201-292 of human Cyclin D3 (NP_001751.1).

Synonyms

CCND3; cyclin D3; Cyclin D3

Contact

 | www.abclonal.com

Product Information

Source

Rabbit

Isotype

IgG

Purification

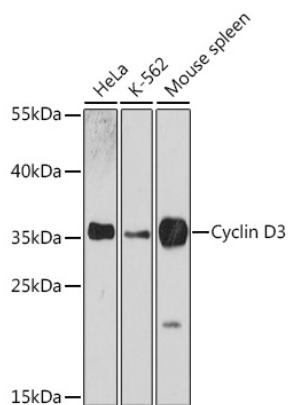
Affinity purification

Storage

Store at -20°C. Avoid freeze / thaw cycles.

Buffer: PBS with 0.02% sodium azide, 50% glycerol, pH7.3.

Validation Data



Western blot analysis of extracts of various cell lines, using Cyclin D3 antibody (A0746) at 1:3000 dilution.

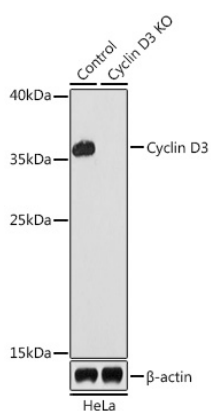
Secondary antibody: HRP Goat Anti-Rabbit IgG (H+L) (AS014) at 1:10000 dilution.

Lysates/proteins: 25ug per lane.

Blocking buffer: 3% nonfat dry milk in TBST.

Detection: ECL Basic Kit (RM00020).

Exposure time: 90s.



Western blot analysis of extracts from normal (control) and Cyclin D3 knockout (KO) HeLa cells, using Cyclin D3 antibody (A0746) at 1:1000 dilution.

Secondary antibody: HRP Goat Anti-Rabbit IgG (H+L) (AS014) at 1:10000 dilution.

Lysates/proteins: 25ug per lane.

Blocking buffer: 3% nonfat dry milk in TBST.

Detection: ECL Basic Kit (RM00020).

Exposure time: 90s.