

# CDCA8 Rabbit pAb

Catalog No.: A0675

## Basic Information

---

**Catalog No.**

A0675

**Observed MW**

36-38kDa

**Calculated MW**

31kDa

**Category**

Primary antibody

**Applications**

WB, IHC

**Cross-Reactivity**

Human, Mouse, Rat

## Recommended Dilutions

---

<b>WB</b>	1:500 - 1:2000
<b>IHC</b>	1:100 - 1:200

## Background

---

This gene encodes a component of the chromosomal passenger complex. This complex is an essential regulator of mitosis and cell division. This protein is cell-cycle regulated and is required for chromatin-induced microtubule stabilization and spindle formation. Alternate splicing results in multiple transcript variants. Pseudogenes of this gene are found on chromosomes 7, 8 and 16.

## Immunogen Information

---

<b>Gene ID</b>	<b>Swiss Prot</b>
55143	Q53HL2

**Immunogen**


Recombinant protein of human CDCA8

**Synonyms**

CDCA8;BOR;BOREALIN;DasraB;MESRGP;borealinn

## Contact

---

 | [www.abclonal.com](http://www.abclonal.com)

## Product Information

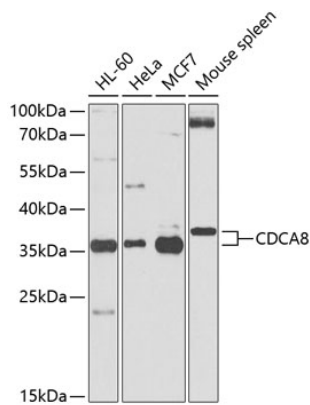
---

<b>Source</b>	<b>Isotype</b>	<b>Purification</b>
Rabbit	IgG	Affinity purification

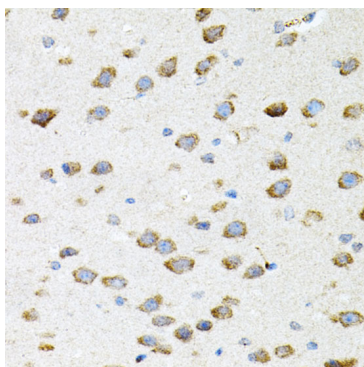
**Storage**

Store at -20°C. Avoid freeze / thaw cycles.  
Buffer: PBS with 0.02% sodium azide,50% glycerol,pH7.3.

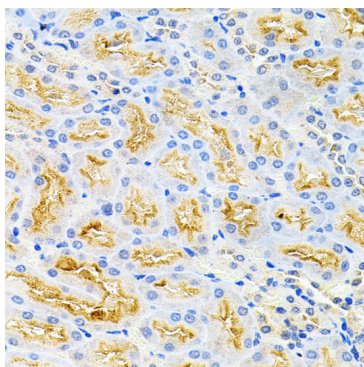
## Validation Data



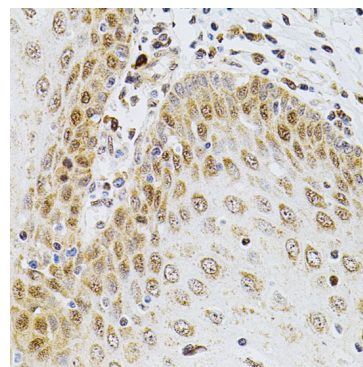
Western blot analysis of extracts of various cell lines, using CDCA8 antibody (A0675) at 1:500 dilution. Secondary antibody: HRP Goat Anti-Rabbit IgG (H+L) (AS014) at 1:10000 dilution. Lysates/proteins: 25ug per lane. Blocking buffer: 3% nonfat dry milk in TBST. Detection: ECL Basic Kit (RM00020). Exposure time: 60s.



Immunohistochemistry of paraffin-embedded mouse brain using CDCA8 antibody (A0675) (40x lens).



Immunohistochemistry of paraffin-embedded rat kidney using CDCA8 antibody (A0675) (40x lens).



Immunohistochemistry of paraffin-embedded human esophagus using CDCA8 antibody (A0675) (40x lens).