

HSP60/HSPD1 Rabbit mAb

Catalog No.: A0564 **Recombinant**

Basic Information

Catalog No.

A0564

Observed MW

60KDa

Calculated MW

60kDa

Category

Primary antibody

Applications

WB, IHC, IF

Cross-Reactivity

Human, Mouse, Rat

Recommended Dilutions

WB	1:500 - 1:2000
IHC	1:50 - 1:200
IF	1:50 - 1:200

Contact

 | www.abclonal.com

Background

This gene encodes a member of the chaperonin family. The encoded mitochondrial protein may function as a signaling molecule in the innate immune system. This protein is essential for the folding and assembly of newly imported proteins in the mitochondria. This gene is adjacent to a related family member and the region between the 2 genes functions as a bidirectional promoter. Several pseudogenes have been associated with this gene. Two transcript variants encoding the same protein have been identified for this gene. Mutations associated with this gene cause autosomal recessive spastic paraplegia 13. [provided by RefSeq, Jun 2010]

Immunogen Information

Gene ID	Swiss Prot
3329	P10809

Immunogen

A synthesized peptide derived from human HSP60/HSPD1/HSPD1

Synonyms

CPN60; GROEL; HLD4; HSP-60; HSP60; HSP65; HuCHA60; SPG13

Product Information

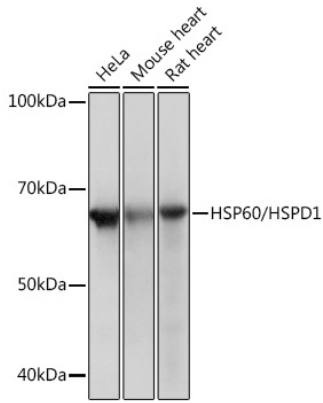
Source	Isotype	Purification
Rabbit	IgG	Affinity purification

Storage

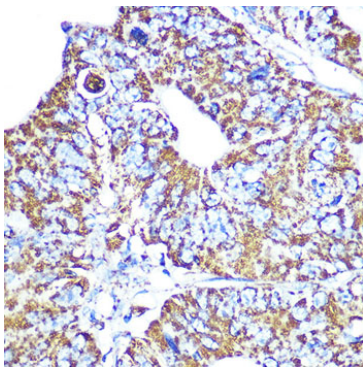
Store at -20°C. Avoid freeze / thaw cycles.

Buffer: PBS with 0.02% sodium azide, 0.05% BSA, 50% glycerol, pH7.3.

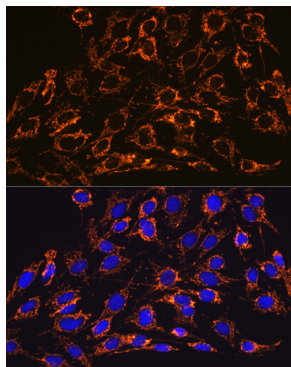
Validation Data



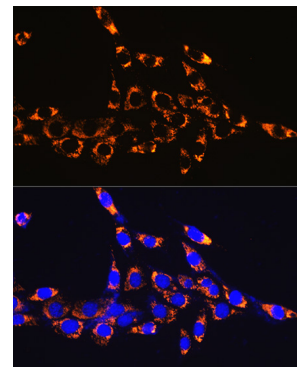
Western blot analysis of extracts of various cell lines, using HSP60/HSPD1/HSPD1 Rabbit mAb (A0564) at 1 : 1000 dilution.
Secondary antibody: HRP Goat Anti-Rabbit IgG (H+L) (AS014) at 1:10000 dilution.
Lysates/proteins: 25ug per lane.
Blocking buffer: 3% nonfat dry milk in TBST.
Detection: ECL Basic Kit (RM00020).
Exposure time: 1s.



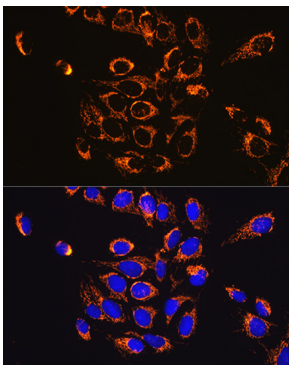
Immunohistochemistry of paraffin-embedded human colon carcinoma using HSP60/HSPD1/HSPD1 Rabbit mAb (A0564) at dilution of 1:100 (40x lens).



Immunofluorescence analysis of C6 cells using HSP60/HSPD1/HSPD1 Rabbit mAb (A0564) at dilution of 1:100 (40x lens). Blue: DAPI for nuclear staining.



Immunofluorescence analysis of NIH-3T3 cells using HSP60/HSPD1/HSPD1 Rabbit mAb (A0564) at dilution of 1:100 (40x lens). Blue: DAPI for nuclear staining.



Immunofluorescence analysis of U-2 OS cells using HSP60/HSPD1/HSPD1 Rabbit mAb (A0564) at dilution of 1:100 (40x lens). Blue: DAPI for nuclear staining.