

[KO Validated] HK1 Rabbit mAb

Catalog No.: A0533 **KO** **Validated** **Recombinant**

Basic Information

Catalog No.

A0533

Observed MW

120kDa

Calculated MW

102kDa

Category

Primary antibody

Applications

WB, IHC, IF, IP

Cross-Reactivity

Human, Mouse, Rat

Recommended Dilutions

WB	1:500 - 1:2000
IHC	1:50 - 1:200
IF	1:50 - 1:200
IP	1:50 - 1:200

Contact

 | www.abclonal.com

Background

Hexokinases phosphorylate glucose to produce glucose-6-phosphate, the first step in most glucose metabolism pathways. This gene encodes a ubiquitous form of hexokinase which localizes to the outer membrane of mitochondria. Mutations in this gene have been associated with hemolytic anemia due to hexokinase deficiency. Alternative splicing of this gene results in several transcript variants which encode different isoforms, some of which are tissue-specific. [provided by RefSeq, Apr 2016]

Immunogen Information

Gene ID	Swiss Prot
3098	P19367

Immunogen

A synthesized peptide derived from human Hexokinase 1

Synonyms

HK; HK1-ta; HK1-tb; HK1-tc; HKD; HKI; HMSNR; HXK1; hexokinase

Product Information

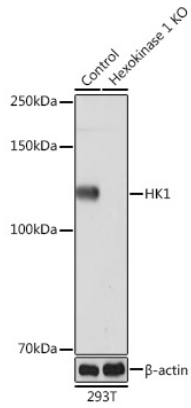
Source	Isotype	Purification
Rabbit	IgG	Affinity purification

Storage

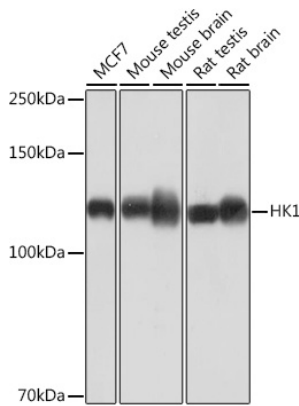
Store at -20°C. Avoid freeze / thaw cycles.

Buffer: PBS with 0.02% sodium azide, 0.05% BSA, 50% glycerol, pH7.3.

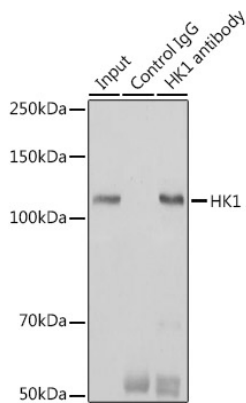
Validation Data



Western blot analysis of extracts from normal (control) and HK1 knockout (KO) 293T cells, using HK1 Rabbit mAb (A0533) at 1: 1000 dilution.
Secondary antibody: HRP Goat Anti-Rabbit IgG (H+L) (AS014) at 1:10000 dilution.
Lysates/proteins: 25ug per lane.
Blocking buffer: 3% nonfat dry milk in TBST.
Detection: ECL Basic Kit (RM00020).
Exposure time: 60s.

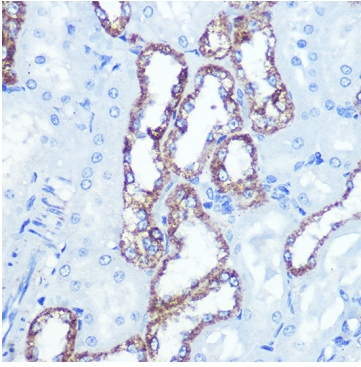


Western blot analysis of extracts of various cell lines, using HK1 Rabbit mAb (A0533) at 1: 1000 dilution.
Secondary antibody: HRP Goat Anti-Rabbit IgG (H+L) (AS014) at 1:10000 dilution.
Lysates/proteins: 25ug per lane.
Blocking buffer: 3% nonfat dry milk in TBST.
Detection: ECL Basic Kit (RM00020).
Exposure time: 60s.

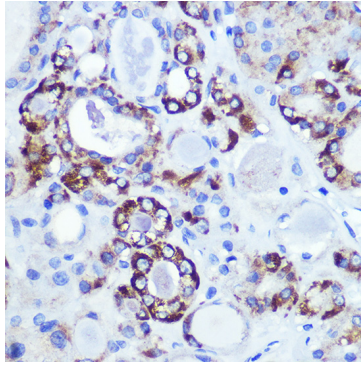


Immunoprecipitation analysis of 600ug extracts of Mouse brain cells using 3ug HK1 antibody (A0533).
Western blot was performed from the immunoprecipitate using HK1 (A0533) at a dilution of 1:1000.

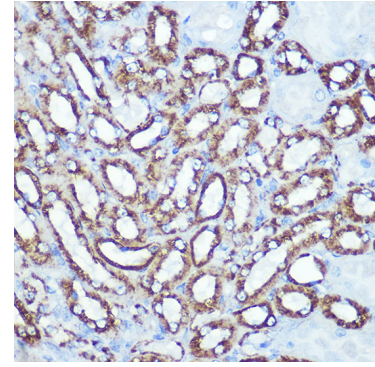
Validation Data



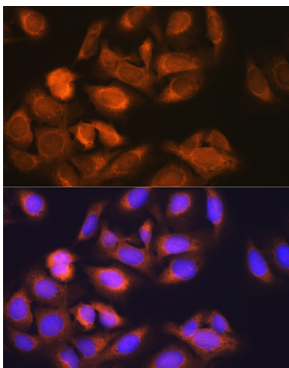
Immunohistochemistry of paraffin-embedded rat kidney using HK1 Rabbit mAb (A0533) at dilution of 1:100 (40x lens).



Immunohistochemistry of paraffin-embedded human thyroid cancer using HK1 Rabbit mAb (A0533) at dilution of 1:100 (40x lens).



Immunohistochemistry of paraffin-embedded mouse kidney using HK1 Rabbit mAb (A0533) at dilution of 1:100 (40x lens).



Immunofluorescence analysis of U-2 OS cells using HK1 Rabbit mAb (A0533) at dilution of 1:100 (40x lens). Blue: DAPI for nuclear staining.