

BMP4 Rabbit pAb

Catalog No.: A0425 **1 Publications**

Basic Information

Catalog No.

A0425

Observed MW

47kDa

Calculated MW

46kDa

Category

Primary antibody

Applications

WB, IF

Cross-Reactivity

Human, Rat

Recommended Dilutions

| | |
|-----------|----------------|
| WB | 1:500 - 1:2000 |
| IF | 1:50 - 1:200 |

Contact

 | www.abclonal.com

Background

This gene encodes a secreted ligand of the TGF-beta (transforming growth factor-beta) superfamily of proteins. Ligands of this family bind various TGF-beta receptors leading to recruitment and activation of SMAD family transcription factors that regulate gene expression. The encoded preproprotein is proteolytically processed to generate each subunit of the disulfide-linked homodimer. This protein regulates heart development and adipogenesis. Mutations in this gene are associated with orofacial cleft and microphthalmia in human patients. The encoded protein may also be involved in the pathology of multiple cardiovascular diseases and human cancers.

Immunogen Information

| | |
|----------------|-------------------|
| Gene ID | Swiss Prot |
| 652 | P12644 |

Immunogen

Recombinant fusion protein containing a sequence corresponding to amino acids 1-408 of human BMP4 (NP_570912.2).

Synonyms

BMP4;BMP2B;BMP2B1;MCOPS6;OFC11;ZYME

Product Information

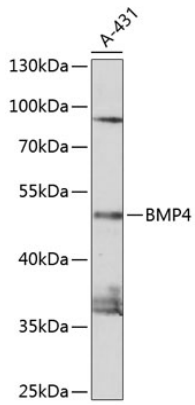
| | | |
|---------------|----------------|-----------------------|
| Source | Isotype | Purification |
| Rabbit | IgG | Affinity purification |

Storage

Store at -20°C. Avoid freeze / thaw cycles.

Buffer: PBS with 0.02% sodium azide,50% glycerol,pH7.3.

Validation Data



Western blot analysis of extracts of A431 cells, using BMP4 antibody (A0425) at 1:1000 dilution.
Secondary antibody: HRP Goat Anti-Rabbit IgG (H+L) (AS014) at 1:10000 dilution.
Lysates/proteins: 25ug per lane.
Blocking buffer: 3% nonfat dry milk in TBST.
Detection: ECL Basic Kit (RM00020).
Exposure time: 90s.