

# CARD8 Rabbit pAb

Catalog No.: A0293

## Basic Information

### Catalog No.

A0293

### Observed MW

60kDa

### Calculated MW

32kDa/44kDa/48kDa/55kDa/60kDa

### Category

Primary antibody

### Applications

WB

### Cross-Reactivity

Human

## Recommended Dilutions

**WB** 1:500 - 1:2000

## Background

The protein encoded by this gene belongs to the caspase recruitment domain (CARD)-containing family of proteins, which are involved in pathways leading to activation of caspases or nuclear factor kappa-B (NFkB). This protein may be a component of the inflammasome, a protein complex that plays a role in the activation of proinflammatory caspases. It is thought that this protein acts as an adaptor molecule that negatively regulates NFkB activation, CASP1-dependent IL1B secretion, and apoptosis.

Polymorphisms in this gene may be associated with a susceptibility to rheumatoid arthritis. Alternatively spliced transcript variants have been described for this gene.

## Immunogen Information

### Gene ID

22900

### Swiss Prot

Q9Y2G2

### Immunogen

Recombinant fusion protein containing a sequence corresponding to amino acids 1-200 of human CARD8 (NP\_003796.1).

### Synonyms

CARD8;CARDINAL;DACAR;DAKAR;NDPP;NDPP1;TUCAN

## Contact

 | [www.abclonal.com](http://www.abclonal.com)

## Product Information

### Source

Rabbit

### Isotype

IgG

### Purification

Affinity purification

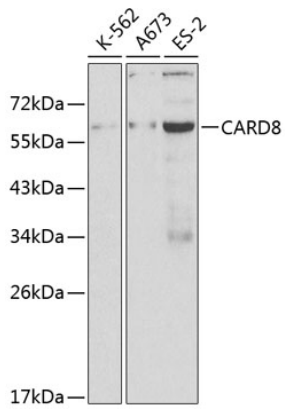
### Storage

Store at -20°C. Avoid freeze / thaw cycles.

Buffer: PBS with 0.02% sodium azide,50% glycerol,pH7.3.

## Validation Data

---



Western blot analysis of extracts of various cell lines, using CARD8 antibody (A0293) at 1:1000 dilution.

Secondary antibody: HRP Goat Anti-Rabbit IgG (H+L) (AS014) at 1:10000 dilution.

Lysates/proteins: 25ug per lane.

Blocking buffer: 3% nonfat dry milk in TBST.