

[KO Validated] CDKN1B/p27KIP1 Rabbit pAb

Catalog No.: A0290

KO Validated**4 Publications**

Basic Information

Catalog No.

A0290

Observed MW

27kDa

Calculated MW

22kDa

Category

Primary antibody

Applications

WB, IHC, IF

Cross-Reactivity

Human, Mouse, Rat

Recommended Dilutions

WB	1:500 - 1:2000
IHC	1:50 - 1:200
IF	1:20 - 1:50

Contact

 | www.abclonal.com

Background

This gene encodes a cyclin-dependent kinase inhibitor, which shares a limited similarity with CDK inhibitor CDKN1A/p21. The encoded protein binds to and prevents the activation of cyclin E-CDK2 or cyclin D-CDK4 complexes, and thus controls the cell cycle progression at G1. The degradation of this protein, which is triggered by its CDK dependent phosphorylation and subsequent ubiquitination by SCF complexes, is required for the cellular transition from quiescence to the proliferative state. Mutations in this gene are associated with multiple endocrine neoplasia type IV (MEN4).

Immunogen Information

Gene ID	Swiss Prot
1027	P46527

Immunogen

Recombinant fusion protein containing a sequence corresponding to amino acids 1-198 of human CDKN1B/p27KIP1 (NP_004055.1).

Synonyms

CDKN1B;CDKN4;KIP1;MEN1B;MEN4;P27KIP1;p27 KIP 1

Product Information

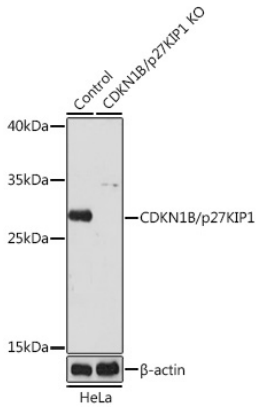
Source	Isotype	Purification
Rabbit	IgG	Affinity purification

Storage

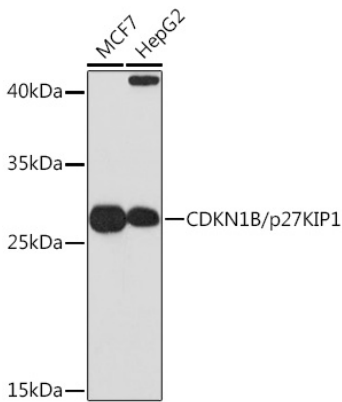
Store at -20°C. Avoid freeze / thaw cycles.

Buffer: PBS with 0.02% sodium azide,50% glycerol,pH7.3.

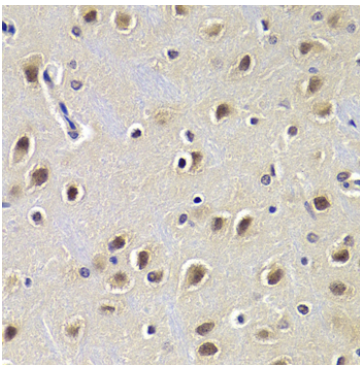
Validation Data



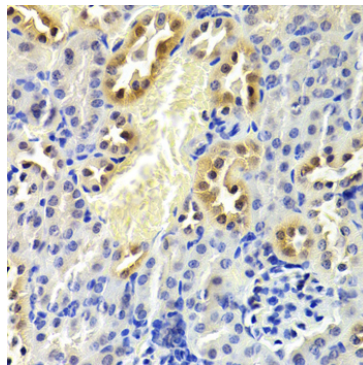
Western blot analysis of extracts from normal (control) and CDKN1B/p27KIP1 knockout (KO) HeLa cells, using CDKN1B/p27KIP1 antibody (A0290) at 1:1000 dilution.
Secondary antibody: HRP Goat Anti-Rabbit IgG (H+L) (AS014) at 1:10000 dilution.
Lysates/proteins: 25ug per lane.
Blocking buffer: 3% nonfat dry milk in TBST.
Detection: ECL Basic Kit (RM00020).
Exposure time: 3min.



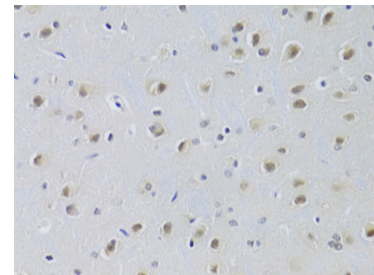
Western blot analysis of extracts of various cell lines, using CDKN1B/p27KIP1 Rabbit pAb (A0290) at 1:1000 dilution.
Secondary antibody: HRP Goat Anti-Rabbit IgG (H+L) (AS014) at 1:10000 dilution.
Lysates/proteins: 25ug per lane.
Blocking buffer: 3% nonfat dry milk in TBST.
Detection: ECL Basic Kit (RM00020).
Exposure time: 3min.



Immunohistochemistry of paraffin-embedded rat brain using CDKN1B/p27KIP1 Antibody (A0290) at dilution of 1:200 (40x lens).

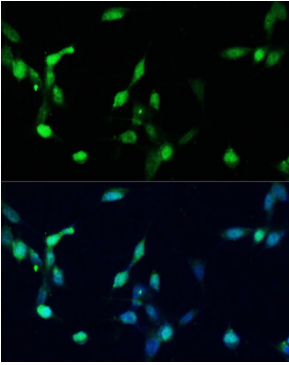


Immunohistochemistry of paraffin-embedded mouse kidney using CDKN1B/p27KIP1 Antibody (A0290) at dilution of 1:200 (40x lens).

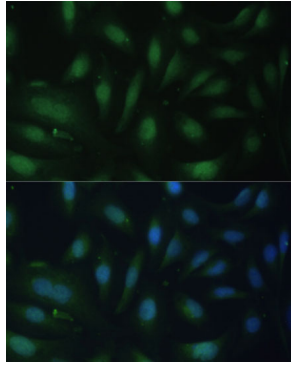


Immunohistochemistry of paraffin-embedded rat brain using CDKN1B/p27KIP1 Antibody (A0290) at dilution of 1:100 (40x lens).

Validation Data



Immunofluorescence analysis of NIH/3T3 cells using p27 KIP 1 antibody (A0290) at dilution of 1:100. Blue: DAPI for nuclear staining.



Immunofluorescence analysis of U-2 OS cells using p27 KIP 1 antibody (A0290) at dilution of 1:100. Blue: DAPI for nuclear staining.