

Alpha-Fetoprotein (AFP) Rabbit pAb

Catalog No.: A0200 **4 Publications**

Basic Information

Catalog No.

A0200

Observed MW

68kDa

Calculated MW

68kDa

Category

Primary antibody

Applications

WB

Cross-Reactivity

Human, Mouse, Rat

Recommended Dilutions

WB 1:500 - 1:2000

Background

This gene encodes alpha-fetoprotein, a major plasma protein produced by the yolk sac and the liver during fetal life. Alpha-fetoprotein expression in adults is often associated with hepatoma or teratoma. However, hereditary persistence of alpha-fetoprotein may also be found in individuals with no obvious pathology. The protein is thought to be the fetal counterpart of serum albumin, and the alpha-fetoprotein and albumin genes are present in tandem in the same transcriptional orientation on chromosome 4. Alpha-fetoprotein is found in monomeric as well as dimeric and trimeric forms, and binds copper, nickel, fatty acids and bilirubin. The level of alpha-fetoprotein in amniotic fluid is used to measure renal loss of protein to screen for spina bifida and anencephaly.

Immunogen Information

Gene ID

174

Swiss Prot

P02771

Immunogen

Recombinant fusion protein containing a sequence corresponding to amino acids 360-609 of human Alpha-Fetoprotein (Alpha-Fetoprotein (AFP)) (NP_001125.1).

Synonyms

AFPD;FETA;HPAFP;AFP

Contact

 | www.abclonal.com

Product Information

Source

Rabbit

Isotype

IgG

Purification

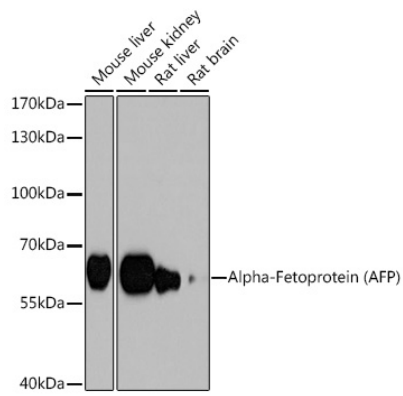
Affinity purification

Storage

Store at -20°C. Avoid freeze / thaw cycles.

Buffer: PBS with 0.02% sodium azide, 50% glycerol, pH7.3.

Validation Data



Western blot analysis of extracts of various cell lines, using Alpha-Fetoprotein (Alpha-Fetoprotein (AFP)) antibody (A0200) at 1:1000 dilution.

Secondary antibody: HRP Goat Anti-Rabbit IgG (H+L) (AS014) at 1:10000 dilution.

Lysates/proteins: 25ug per lane.

Blocking buffer: 3% nonfat dry milk in TBST.

Detection: ECL Basic Kit (RM00020).

Exposure time: 40s.