

ARAF Rabbit pAb

Catalog No.: A0180

Basic Information

Catalog No.

A0180

Observed MW

71kDa

Calculated MW

20kDa/67kDa

Category

Primary antibody

Applications

WB, IF

Cross-Reactivity

Human

Recommended Dilutions

WB	1:500 - 1:1000
IF	1:50 - 1:200

Contact

 | www.abclonal.com

Background

This proto-oncogene belongs to the RAF subfamily of the Ser/Thr protein kinase family, and maybe involved in cell growth and development. Alternatively spliced transcript variants encoding different isoforms have been found for this gene.

Immunogen Information

Gene ID	Swiss Prot
369	P10398

Immunogen

Recombinant fusion protein containing a sequence corresponding to amino acids 371-606 of human ARAF (NP_001645.1).

Synonyms

ARAF;A-RAF;ARAF1;PKS2;RAFA1

Product Information

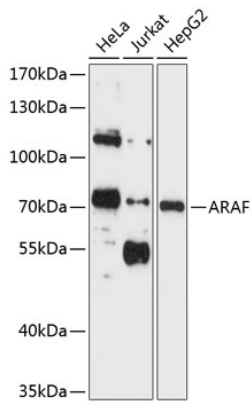
Source	Isotype	Purification
Rabbit	IgG	Affinity purification

Storage

Store at -20°C. Avoid freeze / thaw cycles.

Buffer: PBS with 0.02% sodium azide,50% glycerol,pH7.3.

Validation Data



Western blot analysis of extracts of various cell lines, using ARAF antibody (A0180) at 1:1000 dilution. Secondary antibody: HRP Goat Anti-Rabbit IgG (H+L) (AS014) at 1:10000 dilution. Lysates/proteins: 25ug per lane. Blocking buffer: 3% nonfat dry milk in TBST. Detection: ECL Enhanced Kit (RM00021). Exposure time: 5s.