

# ALDH1A1 Rabbit mAb

Catalog No.: A0157 **Recombinant**

## Basic Information

**Catalog No.**

A0157

**Observed MW**

55KDa

**Calculated MW**

55kDa

**Category**

Primary antibody

**Applications**

WB, IF, IP

**Cross-Reactivity**

Human, Mouse, Rat

## Recommended Dilutions

<b>WB</b>	1:500 - 1:2000
<b>IF</b>	1:50 - 1:200
<b>IP</b>	1:50 - 1:200

## Contact

 | [www.abclonal.com](http://www.abclonal.com)

## Background

The protein encoded by this gene belongs to the aldehyde dehydrogenase family. Aldehyde dehydrogenase is the next enzyme after alcohol dehydrogenase in the major pathway of alcohol metabolism. There are two major aldehyde dehydrogenase isozymes in the liver, cytosolic and mitochondrial, which are encoded by distinct genes, and can be distinguished by their electrophoretic mobility, kinetic properties, and subcellular localization. This gene encodes the cytosolic isozyme. Studies in mice show that through its role in retinol metabolism, this gene may also be involved in the regulation of the metabolic responses to high-fat diet. [provided by RefSeq, Mar 2011]

## Immunogen Information

<b>Gene ID</b>	<b>Swiss Prot</b>
216	P00352

**Immunogen**

A synthesized peptide derived from human ALDH1A1

**Synonyms**

ALDC; ALDH-E1; ALDH1; ALDH11; HEL-9; HEL-S-53e; HEL12; PUMB1; RALDH1

## Product Information

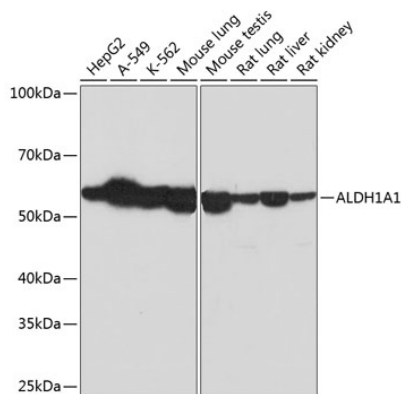
<b>Source</b>	<b>Isotype</b>	<b>Purification</b>
Rabbit	IgG	Affinity purification

**Storage**

Store at -20°C. Avoid freeze / thaw cycles.

Buffer: PBS with 0.02% sodium azide, 0.05% BSA, 50% glycerol, pH 7.3.

## Validation Data



Western blot analysis of extracts of various cell lines, using ALDH1A1 Rabbit mAb (A0157) at 1:1000 dilution.

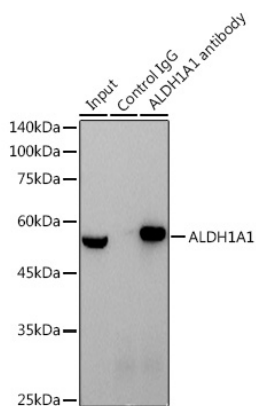
Secondary antibody: HRP Goat Anti-Rabbit IgG (H+L) (AS014) at 1:10000 dilution.

Lysates/proteins: 25ug per lane.

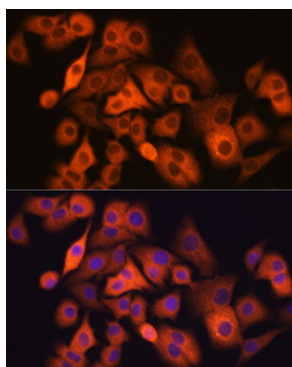
Blocking buffer: 3% nonfat dry milk in TBST.

Detection: ECL Basic Kit (RM00020).

Exposure time: 60s.



Immunoprecipitation analysis of 600ug extracts of Mouse testis cells using 3ug ALDH1A1 antibody (A0157). Western blot was performed from the immunoprecipitate using ALDH1A1 antibody (A0157) at a dilution of 1:1000.



Immunofluorescence analysis of A549 cells using ALDH1A1 Rabbit mAb (A0157) at dilution of 1:100 (40x lens). Blue: DAPI for nuclear staining.